



Double cover of modular S_4 for flavour model building

P.P. Novichkov^{a,*}, J.T. Penedo^b, S.T. Petcov^{a,c,1}

^a *SISSA/INFN, Via Bonomea 265, 34136 Trieste, Italy*

^b *CFTP, Departamento de Física, Instituto Superior Técnico, Universidade de Lisboa, Avenida Rovisco Pais 1, 1049-001 Lisboa, Portugal*

^c *Kavli IPMU (WPI), University of Tokyo, 5-1-5 Kashiwanoha, 277-8583 Kashiwa, Japan*

Received 2 November 2020; received in revised form 14 December 2020; accepted 24 December 2020

Available online 29 December 2020

Editor: Tommy Ohlsson

Abstract

We develop the formalism of the finite modular group $\Gamma'_4 \equiv S'_4$, a double cover of the modular permutation group $\Gamma_4 \simeq S_4$, for theories of flavour. The integer weight $k > 0$ of the level 4 modular forms indispensable for the formalism can be even or odd. We explicitly construct the lowest-weight ($k = 1$) modular forms in terms of two Jacobi theta constants, denoted as $\varepsilon(\tau)$ and $\theta(\tau)$, τ being the modulus. We show that these forms furnish a 3D representation of S'_4 not present for S_4 . Having derived the S'_4 multiplication rules and Clebsch-Gordan coefficients, we construct multiplets of modular forms of weights up to $k = 10$. These are expressed as polynomials in ε and θ , bypassing the need to search for non-linear constraints. We further show that within S'_4 there are two options to define the (generalised) CP transformation and we discuss the possible residual symmetries in theories based on modular and CP invariance. Finally, we provide two examples of application of our results, constructing phenomenologically viable lepton flavour models. © 2020 The Authors. Published by Elsevier B.V. This is an open access article under the CC BY license (<http://creativecommons.org/licenses/by/4.0/>). Funded by SCOAP³.

1. Introduction

The origin of the flavour structures of quarks and leptons remains a fundamental mystery in particle physics. In the lepton sector in particular, data from neutrino oscillation experiments [1]

* Corresponding author.

E-mail addresses: pavel.novichkov@sissa.it (P.P. Novichkov), joao.t.n.penedo@tecnico.ulisboa.pt (J.T. Penedo).

¹ Also at Institute of Nuclear Research and Nuclear Energy, Bulgarian Academy of Sciences, 1784 Sofia, Bulgaria.

has revealed a mixing pattern of two large and one small mixing angles, which suggests a non-Abelian discrete flavour symmetry may be at play [2–6]. Future observations are expected to put such symmetry-based scenarios to the test via, e.g., high precision measurements of the neutrino mixing angles and of the amount of leptonic Dirac CP Violation (CPV). Of paramount importance are also the measurement of the absolute scale of neutrino masses and the determination of the neutrino mass ordering. Recent global data analyses (see, e.g., [7,8]) show that data favour values of the leptonic Dirac CPV phase δ close to $3\pi/2$,² and a neutrino mass spectrum with normal ordering (NO) over the one with inverted ordering (IO), the IO spectrum being disfavoured at $\sim 3\sigma$ confidence level. Upper bounds on the sum of neutrino masses in the range of $\Sigma < 0.12 - 0.69$ eV (at the 2σ level) are also found in the most recent analysis [8], where the quoted largest upper limit corresponds to the cosmological data set used as input which leads to the most conservative result.

Within the approach of postulating a discrete symmetry and its breaking pattern, one can generically predict correlations between some of the three neutrino mixing angles and/or between some of, or all, these angles and δ (see, e.g. [6]). Majorana CPV phases remain instead unconstrained, unless one combines the discrete symmetry with a generalised CP (gCP) symmetry [10,11]. While the latter scenarios are more predictive, one is still required to construct specific models to obtain predictions for neutrino masses. These models typically rely on the introduction of a plethora of so-called flavon scalar fields, acquiring specifically aligned vacuum expectation values (VEVs), which require a rather elaborate potential and additional large shaping symmetries.

The modular invariance approach to the flavour problem put forward in Ref. [12] has opened up a new direction in flavour model building. Modular symmetry is introduced into the supersymmetric (SUSY) flavour picture, with quotients Γ_N of the modular group ($N = 2, 3, \dots$) playing the role of non-Abelian discrete symmetry groups. For $N \leq 5$, these finite modular groups are isomorphic to the permutation groups S_3 , A_4 , S_4 and A_5 , widely used in flavour model building. The traditional approach to flavour is thus generalised, since fields can carry non-trivial modular weights k , further constraining their couplings in the superpotential. Furthermore, no flavons need to be introduced in the model. In such a case, Yukawa couplings and fermion mass matrices in the Lagrangian of the theory are obtained from combinations of modular forms, which are holomorphic functions of a single complex number – the VEV of the modulus τ – and have specific transformation properties under the action of the modular symmetry group. Models of flavour based on modular invariance have then an increased predictive power, constraining fermion masses, mixing and CPV phases.³

Bottom-up modular invariance approaches to the lepton flavour problem have been exploited using the groups $\Gamma_2 \simeq S_3$ [14,15], $\Gamma_3 \simeq A_4$ [12,14,16–31], $\Gamma_4 \simeq S_4$ [25,32–37], $\Gamma_5 \simeq A_5$ [38,39], and $\Gamma_7 \simeq PSL(2, \mathbb{Z}_7)$ [40]. Similarly, attempts have been made to construct viable models of quark flavour [41] and of quark-lepton unification [42–46]. The interplay of modular and gCP symmetries has also been investigated [47,48], as were the problem of fermion mass hierarchies [49,50] and the possibility of coexistence of multiple moduli [51,52], considered first phenomenologically in [18,33]. Such bottom-up analyses are expected to eventually connect with top-down results [53–65] based on ultraviolet-complete theories. While the aforementioned fi-

² The best fit value of δ obtained by the T2K Collaboration in the latest data analysis is also close to $3\pi/2$, while the CP conserving values $\delta = 0$ and π are disfavoured by the T2K data respectively at 3σ and 2σ [9].

³ Possible non-minimal additions to the Kähler potential, compatible with the modular symmetry, may jeopardise the predictive power of the framework [13]. This problem is the subject of ongoing research.

nite quotients Γ_N of the modular group – also known as inhomogeneous finite modular groups – have been widely used in the literature to construct modular-invariant models of flavour from the bottom-up perspective, top-down constructions typically lead to their double covers Γ'_N (see, e.g., [56,58,59,66]). The formalism of such double covers has been explored in Ref. [67], where the case of $\Gamma'_3 \simeq T'$ was considered (see also [68]).

In the present work, we analyse the double cover of the $\Gamma_4 \simeq S_4$ finite modular group, namely $\Gamma'_4 \simeq S'_4 \equiv SL(2, \mathbb{Z}_4)$, which, in view of the above discussion, appears theoretically more motivated than Γ_4 . We start by briefly reviewing the modular symmetry approach to flavour in Section 2 (see Ref. [69] for a recent review), considering also its generalisation to the case of double covers of finite modular groups. In Section 3, we compute the fundamental object required for flavour model building: the modular multiplet of lowest modular weight ($k = 1$). In particular, we write the $k = 1$ modular forms in terms of two “weight 1/2” functions $\theta(\tau)$ and $\varepsilon(\tau)$, which are obtained from the Dedekind eta function and present interesting features. The $k = 1$ forms are then found to arrange themselves into a triplet $\mathbf{3}$ of S'_4 . This fundamental triplet is used to derive higher-weight multiplets, up to $k = 10$, via tensor products. We thus obtain new, odd-weight modular multiplets specific to $\Gamma'_4 \simeq S'_4$, and recover the even-weight modular multiplets of $\Gamma_4 \simeq S_4$ [32,33,47]. Given our construction in terms of θ and ε , the derivation of $k > 1$ modular multiplets automatically bypasses a typical need to search for non-linear constraints, which would relate dependent multiplets coming from tensor products. In Section 4 we discuss the problem of combining modular and CP invariance in theories based on S'_4 , while in Section 5 we analyse the possible residual symmetries in such theories. In Section 6, we illustrate phenomenological applications of our results, by building and analysing two viable models of lepton masses and mixing based on S'_4 modular symmetry. We finally summarise our results and conclude in Section 7.

2. Framework

2.1. The modular group and transformation of fields

We introduce a complex scalar field τ , called the *modulus*, whose VEV is restricted to the upper half-plane $\mathcal{H} \equiv \{\tau \in \mathbb{C} : \text{Im } \tau > 0\}$.⁴ The modulus τ plays the role of a spurion and transforms non-trivially under the *modular group* Γ , which is the special linear group of 2×2 integer matrices with unit determinant, i.e.

$$\Gamma \equiv SL(2, \mathbb{Z}) \equiv \left\{ \begin{pmatrix} a & b \\ c & d \end{pmatrix} \middle| a, b, c, d \in \mathbb{Z}, ad - bc = 1 \right\}. \quad (2.1)$$

The group Γ is generated by three matrices

$$S = \begin{pmatrix} 0 & 1 \\ -1 & 0 \end{pmatrix}, \quad T = \begin{pmatrix} 1 & 1 \\ 0 & 1 \end{pmatrix}, \quad R = \begin{pmatrix} -1 & 0 \\ 0 & -1 \end{pmatrix}, \quad (2.2)$$

subject to the following relations:

$$S^2 = R, \quad (ST)^3 = \mathbb{1}, \quad R^2 = \mathbb{1}, \quad RT = TR, \quad (2.3)$$

where $\mathbb{1}$ denotes the identity element of a group.

⁴ We use τ to denote both the modulus and its VEV.

The modular group Γ acts on the modulus with fractional linear transformations:

$$\gamma = \begin{pmatrix} a & b \\ c & d \end{pmatrix} \in \Gamma : \tau \rightarrow \gamma\tau = \frac{a\tau + b}{c\tau + d}. \tag{2.4}$$

The matter superfields transform under Γ as “weighted” multiplets [12,66,70]:

$$\psi_i \rightarrow (c\tau + d)^{-k} \rho_{ij}(\gamma) \psi_j, \tag{2.5}$$

where $(c\tau + d)^{-k}$ is the automorphy factor, $k \in \mathbb{Z}$ is the modular weight⁵ and ρ is a unitary representation of Γ .

Note that the group action (2.4) has a non-trivial kernel $\mathbb{Z}_2^R = \{1, R\}$, i.e. the modulus τ does not transform under the action of R . For this reason one typically defines the (inhomogeneous) modular group as the quotient $\bar{\Gamma} \equiv PSL(2, \mathbb{Z}) \equiv SL(2, \mathbb{Z}) / \mathbb{Z}_2^R$, which is the projective version of $SL(2, \mathbb{Z})$ with matrices γ and $-\gamma$ being identified. However, matter fields of a modular-invariant theory are in general allowed to transform under R , as can be seen from (2.5). Therefore the symmetry group of such theory is Γ rather than $\bar{\Gamma}$, as was stressed recently in [59]. The inclusion of the R generator is crucial in extending finite modular groups to their double covers, as we will see shortly.

We assume that representations of matter fields are trivial when restricted to the so-called principal congruence subgroup,

$$\Gamma(N) \equiv \left\{ \begin{pmatrix} a & b \\ c & d \end{pmatrix} \in SL(2, \mathbb{Z}), \begin{pmatrix} a & b \\ c & d \end{pmatrix} \equiv \begin{pmatrix} 1 & 0 \\ 0 & 1 \end{pmatrix} \pmod{N} \right\}, \tag{2.6}$$

with a fixed integer $N \geq 2$ called the level. In other words, $\rho(\gamma)$ of eq. (2.5) is the identity matrix whenever $\gamma \in \Gamma(N)$, so that ρ is effectively a representation of the quotient group

$$\Gamma'_N \equiv \Gamma / \Gamma(N) \simeq SL(2, \mathbb{Z}_N), \tag{2.7}$$

called the homogeneous finite modular group. Unlike Γ , Γ'_N is finite as the name suggests. For $N \leq 5$, this group admits the presentations⁶

$$\begin{aligned} \Gamma'_N &= \langle S, T, R \mid S^2 = R, (ST)^3 = 1, R^2 = 1, RT = TR, T^N = 1 \rangle \\ &= \langle S, T \mid S^4 = 1, (ST)^3 = 1, S^2T = TS^2, T^N = 1 \rangle, \end{aligned} \tag{2.8}$$

where with a slight abuse of notation we denote by S, T, R the equivalence classes of the corresponding generators (2.2) of the full modular group.

In the special case when ρ does not distinguish between γ and $-\gamma$, i.e. $\rho(R)$ is identity, we see that ρ is a representation of a smaller quotient group

$$\Gamma_N \equiv \Gamma / \left(\Gamma(N) \cup \mathbb{Z}_2^R \right) \simeq SL(2, \mathbb{Z}_N) / \langle R \rangle, \tag{2.9}$$

called the (inhomogeneous) finite modular group. For $N \leq 5$, Γ_N has the following presentation:

$$\Gamma_N = \langle S, T \mid S^2 = 1, (ST)^3 = 1, T^N = 1 \rangle. \tag{2.10}$$

Note that $R \in \Gamma(2)$, hence $\Gamma_2 = \Gamma'_2$. In contrast, for $N \geq 3$ one has $R \notin \Gamma(N)$, and Γ'_N is a double cover of Γ_N . For small values of N , the groups Γ_N and Γ'_N are isomorphic to permutation groups and their double covers, see Table 1.

⁵ While we restrict ourselves to integer modular weights, it is also possible to have fractional weights k [59,71–73].

⁶ For $N > 5$, additional relations are needed in order to render the group finite [74].

Table 1
Finite modular groups and dimensionality of the corresponding spaces of modular forms, for $N \leq 5$. Note that for $N = 2$ only even-weighted modular forms exist.

N	2	3	4	5
Γ_N	S_3	A_4	S_4	A_5
Γ'_N	S_3	$A'_4 \equiv T'$	$S'_4 \equiv SL(2, \mathbb{Z}_4)$	$A'_5 \equiv SL(2, \mathbb{Z}_5)$
$\dim \mathcal{M}_k(\Gamma(N))$	$k/2 + 1$	$k + 1$	$2k + 1$	$5k + 1$

As a final remark, let us stress that the level N defining the finite modular group is common to all matter fields ψ_I , which may however carry different modular weights k_I .

2.2. Modular forms and modular-invariant actions

The Lagrangian of a $\mathcal{N} = 1$ global supersymmetric theory is given by

$$\mathcal{L} = \int d^2\theta d^2\bar{\theta} K(\Phi, \bar{\Phi}) + \left[\int d^2\theta W(\Phi) + \text{h.c.} \right], \tag{2.11}$$

where K is the Kähler potential, W is the superpotential, θ and $\bar{\theta}$ are Grassmann variables, and Φ collectively denotes chiral superfields of the theory. In modular-invariant supersymmetric theories, τ is the scalar component of a chiral superfield, and the superpotential has to be modular-invariant, $W(\Phi) \xrightarrow{\gamma} W(\Phi)$ [70]. In theories of supergravity, the superpotential is instead coupled to the Kähler potential and has to transform with a certain weight $-h$ under modular transformations (up to a field-independent phase) [66,70]:

$$\gamma = \begin{pmatrix} a & b \\ c & d \end{pmatrix} \in \Gamma: W(\Phi) \rightarrow e^{i\alpha(\gamma)} (c\tau + d)^{-h} W(\Phi). \tag{2.12}$$

The superpotential can be expanded in powers of matter superfields ψ_I as:

$$W(\tau, \psi_I) = \sum \left(Y_{I_1 \dots I_n}(\tau) \psi_{I_1} \dots \psi_{I_n} \right)_1, \tag{2.13}$$

where the sum is taken over all possible combinations of fields $\{I_1, \dots, I_n\}$ and all independent singlets of Γ'_N , denoted by $(\dots)_1$.⁷

In order to satisfy (2.12) given the field transformation rules (2.5), the field couplings $Y_{I_1 \dots I_n}(\tau)$ have to be modular forms of level N and weight $k_Y = k_{I_1} + \dots + k_{I_n} - h$, i.e., transform under Γ as

$$Y_{I_1 \dots I_n}(\tau) \rightarrow Y_{I_1 \dots I_n}(\gamma\tau) = (c\tau + d)^{k_Y} \rho(\gamma) Y_{I_1 \dots I_n}(\tau), \tag{2.14}$$

where ρ is a unitary representation of the homogeneous finite modular group Γ'_N such that $\rho \otimes \rho_{I_1} \otimes \dots \otimes \rho_{I_n} \supset \mathbf{1}$. Apart from that, due to holomorphicity of the superpotential, modular forms have to be holomorphic functions of τ . Together with the transformation property (2.14), this significantly constrains the space of modular forms. In fact, non-trivial modular forms of a given level N exist only for positive integer weights $k \in \mathbb{N}$ and form finite-dimensional linear spaces $\mathcal{M}_k(\Gamma(N))$ which decompose into multiplets of Γ'_N . As can be seen from Table 1, the

⁷ Since the field-independent phase factor in (2.12) does not affect the supergravity scalar potential, these singlets need not be trivial. All terms in (2.13) should nevertheless transform in the same way under the modular group.

spaces $\mathcal{M}_k(\Gamma(N))$ have low dimensionalities for small values of k and N . Therefore it is possible to form only a few independent Yukawa couplings, which yields predictive models of flavour.

By analysing eq. (2.14), one notes that odd-weighted modular forms necessarily have $\rho(R) = -1$ in order to compensate the minus sign arising from the automorphy factor, while for even-weighted modular forms one has $\rho(R) = 1$. Therefore, in modular-invariant theories based on inhomogeneous modular groups Γ_N only even-weighted modular forms appear.

3. Modular forms of level 4

3.1. “Weight 1/2” modular forms

Modular forms of level 4 and weight k form a linear space of dimension $2k + 1$ given by [75]:

$$\begin{aligned} \mathcal{M}_k(\Gamma(4)) &= \bigoplus_{\substack{m+n=2k, \\ m,n \geq 0}} \mathbb{C} \frac{\eta^{2n-2m}(4\tau) \eta^{5m-n}(2\tau)}{\eta^{2m}(\tau)} \\ &= \bigoplus_{\substack{m+n=2k, \\ m,n \geq 0}} \mathbb{C} \left(\frac{\eta^5(2\tau)}{\eta^2(\tau)\eta^2(4\tau)} \right)^m \left(\frac{\eta^2(4\tau)}{\eta(2\tau)} \right)^n, \end{aligned} \tag{3.1}$$

where m and n are non-negative integers, and $\eta(\tau)$ is the Dedekind eta function (we collect all the necessary definitions and properties of special functions in Appendix A). In other words, $\mathcal{M}_k(\Gamma(4))$ is spanned by polynomials of even degree $2k$ in two functions $\theta(\tau)$ and $\varepsilon(\tau)$ defined as

$$\theta(\tau) \equiv \frac{\eta^5(2\tau)}{\eta^2(\tau)\eta^2(4\tau)} = \Theta_3(2\tau), \quad \varepsilon(\tau) \equiv \frac{2\eta^2(4\tau)}{\eta(2\tau)} = \Theta_2(2\tau). \tag{3.2}$$

Here $\Theta_2(\tau)$ and $\Theta_3(\tau)$ are the Jacobi theta constants related to the Dedekind eta by eq. (A.5). In particular, we conclude from eq. (3.1) that the space of weight 1 modular forms of level 4 is formed by the homogeneous quadratic polynomials in θ and ε , or equivalently, in the theta constants Θ_2 and Θ_3 of double argument (for more details on the correspondence between modular forms of level 4 and the theta constants, see Appendix B).

From eqs. (3.2) and (A.2) we find immediately that $\theta(\tau)$ and $\varepsilon(\tau)$ admit the following q -expansions, i.e. power series expansions in $q_4 \equiv \exp(i\pi\tau/2)$:

$$\begin{aligned} \theta(\tau) &= 1 + 2 \sum_{k=1}^{\infty} q_4^{(2k)^2} = 1 + 2q_4^4 + 2q_4^{16} + \dots, \\ \varepsilon(\tau) &= 2 \sum_{k=1}^{\infty} q_4^{(2k-1)^2} = 2q_4 + 2q_4^9 + 2q_4^{25} + \dots, \end{aligned} \tag{3.3}$$

so that $\theta \rightarrow 1$, $\varepsilon \rightarrow 0$ in the “large volume” limit $\text{Im } \tau \rightarrow \infty$. In fact, $\varepsilon \sim 2q_4$ in this limit and it can be used as an expansion parameter instead of q_4 , which justifies the notation. Note that, due to quadratic dependence in the exponents of q_4 , the series (3.3) converge rapidly in the fundamental domain of the modular group, where one has $|q_4| \leq \exp(-\pi\sqrt{3}/4) \simeq 0.26$. We give below the values of $\theta(\tau)$ and $\varepsilon(\tau)$ at values of τ , namely τ_C , τ_L , and τ_T , at which there exist residual symmetries (see Section 5 for details):

$$\begin{aligned}
 \theta(\tau_C) &= 1 + 2e^{-2\pi} + O(10^{-11}) \simeq 1.00373, \\
 \varepsilon(\tau_C) &= 2e^{-\pi/2} + O(10^{-6}) \simeq 0.415761; \\
 \theta(\tau_L) &= 1 - 2e^{-\sqrt{3}\pi} + O(10^{-9}) \simeq 0.991333, \\
 \varepsilon(\tau_L) &= 2e^{-i\pi/4} \left[e^{-\sqrt{3}\pi/4} + O(10^{-5}) \right] \simeq 0.512152 e^{-i\pi/4}; \\
 \theta(\tau_T) &= 1, \\
 \varepsilon(\tau_T) &= 0,
 \end{aligned} \tag{3.4}$$

where $\tau_C \equiv i$, $\tau_L \equiv -1/2 + i\sqrt{3}/2$ and $\tau_T \equiv i\infty$. We further find the exact relations at symmetric points:

$$\frac{\varepsilon(\tau_C)}{\theta(\tau_C)} = \frac{1}{1 + \sqrt{2}}, \quad \frac{\varepsilon(\tau_L)}{\theta(\tau_L)} = \frac{1 + i}{1 + \sqrt{3}}. \tag{3.5}$$

The action of the T generator on θ and ε follows from the corresponding transformation of the theta constants (A.3):

$$\theta(\tau) \xrightarrow{T} \theta(\tau), \quad \varepsilon(\tau) \xrightarrow{T} i\varepsilon(\tau). \tag{3.6}$$

Similarly, one can obtain the action of the S generator on θ from eq. (A.3) with the help of identity (A.6):

$$\begin{aligned}
 \theta(\tau) = \Theta_3(2\tau) &= \frac{1}{2} \left[\Theta_3\left(\frac{\tau}{2}\right) + \Theta_4\left(\frac{\tau}{2}\right) \right] \xrightarrow{S} \frac{1}{2} \left[\Theta_3\left(-\frac{1}{2\tau}\right) + \Theta_4\left(-\frac{1}{2\tau}\right) \right] \\
 &= \frac{1}{2} \sqrt{-i2\tau} [\Theta_3(2\tau) + \Theta_2(2\tau)] = \sqrt{-i\tau} \frac{\theta(\tau) + \varepsilon(\tau)}{\sqrt{2}}.
 \end{aligned} \tag{3.7}$$

By requiring that the second action of S should transform the result back to $\theta(\tau)$, we find the corresponding action on $\varepsilon(\tau)$, and conclude that

$$\theta(\tau) \xrightarrow{S} \sqrt{-i\tau} \frac{\theta(\tau) + \varepsilon(\tau)}{\sqrt{2}}, \quad \varepsilon(\tau) \xrightarrow{S} \sqrt{-i\tau} \frac{\theta(\tau) - \varepsilon(\tau)}{\sqrt{2}}. \tag{3.8}$$

From the transformation properties (3.6) and (3.8), one sees that θ and ε work as “weight 1/2” modular forms. Their even powers produce integer weight modular forms, which we consider in the following subsection.

3.2. Weight 1 modular forms

We have seen that the linear space of weight 1 modular forms of level 4 is spanned by three quadratic monomials in $\theta(\tau)$ and $\varepsilon(\tau)$, namely:

$$\theta(\tau)^2, \quad \theta(\tau)\varepsilon(\tau), \quad \varepsilon(\tau)^2, \tag{3.9}$$

such that the linear space of weight $k = 1$ has the correct dimension, $2k + 1 = 3$.

These three functions can be arranged into a triplet furnishing a representation of $S'_4 \equiv SL(2, \mathbb{Z}_4)$, which is a double cover⁸ of the permutation group S_4 [67]. We summarise the group theory of S'_4 in Appendix C.

In the group representation basis of Table 7, the relevant triplet has the form

$$Y_{\mathbf{3}}^{(1)}(\tau) = \begin{pmatrix} \sqrt{2} \varepsilon \theta \\ \varepsilon^2 \\ -\theta^2 \end{pmatrix} \tag{3.10}$$

and furnishes an irreducible representation $\hat{\mathbf{3}}$. Indeed, using the transformation rules (3.6), (3.8) it is easy to check that the triplet (3.10) transforms under the generators of the modular group as expected:

$$\begin{aligned} Y_{\mathbf{3}}^{(1)}(\tau) &\xrightarrow{T} Y_{\mathbf{3}}^{(1)}(\tau + 1) = \rho_{\mathbf{3}}(T) Y_{\mathbf{3}}^{(1)}(\tau), \\ Y_{\mathbf{3}}^{(1)}(\tau) &\xrightarrow{S} Y_{\mathbf{3}}^{(1)}(-1/\tau) = (-\tau) \rho_{\mathbf{3}}(S) Y_{\mathbf{3}}^{(1)}(\tau), \\ Y_{\mathbf{3}}^{(1)}(\tau) &\xrightarrow{R} Y_{\mathbf{3}}^{(1)}(\tau) = (-1) \rho_{\mathbf{3}}(R) Y_{\mathbf{3}}^{(1)}(\tau). \end{aligned} \tag{3.11}$$

The $\hat{\mathbf{3}}$ modular triplet of eq. (3.10) is the base result of our construction. It can be used to generate all modular forms entering and determining the fermion Yukawa couplings and mass matrices, as we will see in what follows.

3.3. Modular forms of higher weights

Modular multiplets of higher weights $Y_{\mathbf{r}, \mu}^{(k>1)}$ may be obtained from those of lower weight via tensor products. Here, the index μ labels linearly independent multiplets (in case more than one is present) for a given weight k and irreducible S'_4 representation \mathbf{r} . The lowest weight multiplet in eq. (3.10) works then as a ‘seed’ multiplet, since all higher weight modular multiplets can be recovered from a sufficient number of tensor products of $Y_{\mathbf{3}}^{(1)}(\tau)$ with itself. Note that the latter has been written in terms of a minimal set of functions of τ from the start, namely $\theta(\tau)$ and $\varepsilon(\tau)$. By doing so, tensor products directly provide spaces of modular forms with the correct dimensions, bypassing the typical need to look for constraints relating redundant higher weight multiplets. In other words, these constraints are manifestly verified given the explicit forms of the multiplet components.

First of all, we recover the known [32] modular S_4 lowest-weight multiplets, a doublet and a triplet(’), which are now expressed in terms of $\theta(\tau)$ and $\varepsilon(\tau)$ and read

$$Y_{\mathbf{2}}^{(2)}(\tau) = \begin{pmatrix} \frac{1}{\sqrt{2}}(\theta^4 + \varepsilon^4) \\ -\sqrt{6} \varepsilon^2 \theta^2 \end{pmatrix}, \quad Y_{\mathbf{3}'}^{(2)}(\tau) = \begin{pmatrix} \frac{1}{\sqrt{2}}(\theta^4 - \varepsilon^4) \\ -2 \varepsilon \theta^3 \\ -2 \varepsilon^3 \theta \end{pmatrix}. \tag{3.12}$$

Our construction reduces to that of modular $\Gamma_4 \simeq S_4$ for even weights (see also Appendix C.1). In order to compare the results in eq. (3.12) with those of Ref. [32], one needs to work in compat-

⁸ Strictly speaking, the term “double cover of symmetric group” is used for a special kind of a double cover called the Schur cover. There are two double covers of S_4 of this kind: the binary octahedral group (group ID [48, 28] in GAP [76,77]) and $GL(2, 3)$ (group ID [48, 29]). Our double cover $SL(2, \mathbb{Z}_4)$ is not a Schur cover of S_4 . It has group ID [48, 30], hence it is a double cover of S_4 in a broader sense.

ible group representation bases, i.e. bases in which the representation matrices $\rho_{\mathbf{r}}(S)$ and $\rho_{\mathbf{r}}(T)$ coincide, for irreducible representations \mathbf{r} common to S_4 and S'_4 (those without hats). The basis for S_4 compatible with the one for S'_4 we here consider, together with the expressions for modular multiplets in that basis, can be found in Ref. [47] (see Appendices B and C therein). Then, by looking at the q -expansions,

$$\begin{aligned}
 Y_{\mathbf{2}}^{(2)}(\tau) &= \begin{pmatrix} \frac{1}{\sqrt{2}}(1 + 24q_4^4 + 24q_4^8 + 96q_4^{12} + 24q_4^{16} + 144q_4^{20} + 96q_4^{24} + \dots) \\ -4\sqrt{6}(q_4^2 + 4q_4^6 + 6q_4^{10} + 8q_4^{14} + 13q_4^{18} + 12q_4^{22} + \dots) \end{pmatrix}, \\
 Y_{\mathbf{3}'}^{(2)}(\tau) &= \begin{pmatrix} \frac{1}{\sqrt{2}}(1 - 8q_4^4 + 24q_4^8 - 32q_4^{12} + 24q_4^{16} - 48q_4^{20} + 96q_4^{24} + \dots) \\ -4(q_4 + 6q_4^5 + 13q_4^9 + 14q_4^{13} + 18q_4^{17} + 32q_4^{21} + 31q_4^{25} + \dots) \\ -16(q_4^3 + 2q_4^7 + 3q_4^{11} + 6q_4^{15} + 5q_4^{19} + 6q_4^{23} + \dots) \end{pmatrix},
 \end{aligned} \tag{3.13}$$

one can see that the modular multiplets in question indeed match, up to normalisation.

Further tensor products with $Y_{\mathbf{3}}^{(1)}$ produce new modular multiplets of odd weight. At weight $k = 3$, a non-trivial singlet and two triplets exclusive to S'_4 arise:

$$\begin{aligned}
 Y_{\mathbf{1}'}^{(3)}(\tau) &= \sqrt{3}(\varepsilon\theta^5 - \varepsilon^5\theta), \\
 Y_{\mathbf{3}}^{(3)}(\tau) &= \begin{pmatrix} \varepsilon^5\theta + \varepsilon\theta^5 \\ \frac{1}{2\sqrt{2}}(5\varepsilon^2\theta^4 - \varepsilon^6) \\ \frac{1}{2\sqrt{2}}(\theta^6 - 5\varepsilon^4\theta^2) \end{pmatrix}, \quad Y_{\mathbf{3}'}^{(3)}(\tau) = \frac{1}{2} \begin{pmatrix} -4\sqrt{2}\varepsilon^3\theta^3 \\ \theta^6 + 3\varepsilon^4\theta^2 \\ -3\varepsilon^2\theta^4 - \varepsilon^6 \end{pmatrix}.
 \end{aligned} \tag{3.14}$$

Finally, at weight $k = 4$ one again recovers the S_4 result. We obtain:

$$\begin{aligned}
 Y_{\mathbf{1}}^{(4)}(\tau) &= \frac{1}{2\sqrt{3}}(\theta^8 + 14\varepsilon^4\theta^4 + \varepsilon^8), \quad Y_{\mathbf{2}}^{(4)}(\tau) = \begin{pmatrix} \frac{1}{4}(\theta^8 - 10\varepsilon^4\theta^4 + \varepsilon^8) \\ \sqrt{3}(\varepsilon^2\theta^6 + \varepsilon^6\theta^2) \end{pmatrix}, \\
 Y_{\mathbf{3}}^{(4)}(\tau) &= \frac{3}{2\sqrt{2}} \begin{pmatrix} \sqrt{2}(\varepsilon^2\theta^6 - \varepsilon^6\theta^2) \\ \varepsilon^3\theta^5 - \varepsilon^7\theta \\ -\varepsilon\theta^7 + \varepsilon^5\theta^3 \end{pmatrix}, \quad Y_{\mathbf{3}'}^{(4)}(\tau) = \begin{pmatrix} \frac{1}{4}(\theta^8 - \varepsilon^8) \\ \frac{1}{2\sqrt{2}}(\varepsilon\theta^7 + 7\varepsilon^5\theta^3) \\ \frac{1}{2\sqrt{2}}(7\varepsilon^3\theta^5 + \varepsilon^7\theta) \end{pmatrix},
 \end{aligned} \tag{3.15}$$

which can be seen to match known multiplets (up to normalisation) by comparing q -expansions. We collect the explicit expressions of S'_4 modular multiplets with higher weights, up to $k = 10$ and written in terms of $\theta(\tau)$ and $\varepsilon(\tau)$, in Appendix D. Note that odd(even)-weighted modular forms always furnish (un)hatted representations, since in our notation hatted representations are exactly the ones for which $\rho(R) = -\mathbb{1}$.

4. Combining gCP and modular symmetries

In models possessing a flavour symmetry, one can define a *generalised CP (gCP) transformation* acting on the matter fields as

$$\psi_i(x) \xrightarrow{\text{CP}} X_{ij} \bar{\psi}_j(x_P), \tag{4.1}$$

with a bar denoting the conjugate field, and where $x = (t, \mathbf{x})$, $x_P = (t, -\mathbf{x})$ and X is a unitary matrix acting on flavour space. Modular symmetry, which plays the role of a flavour symmetry, can be consistently combined with a generalised CP symmetry. This has been done from a bottom-up perspective in [47] for the inhomogeneous modular group $\bar{\Gamma}$. The result of [47] can be generalised to the case of the full modular group Γ as follows.

Starting with eq. (4.1) one can show that the modulus τ should transform under CP as

$$\tau \xrightarrow{\text{CP}} -\tau^*, \tag{4.2}$$

without loss of generality (cf. Ref. [47]). The corresponding action on the modular group Γ is given by an outer automorphism $u(\gamma) \equiv \text{CP} \circ \gamma \circ \text{CP}^{-1}$. The form of $u(\gamma)$ is determined by eq. (4.2): for a transformation $\gamma = \begin{pmatrix} a & b \\ c & d \end{pmatrix} \in \Gamma$ one has the chain

$$\tau \xrightarrow{\text{CP}} -\tau^* \xrightarrow{\gamma} -\frac{a\tau^* + b}{c\tau^* + d} \xrightarrow{\text{CP}^{-1}} \frac{a\tau - b}{-c\tau + d} = u(\gamma)\tau, \tag{4.3}$$

which implies

$$u(\gamma) = \sigma(\gamma) \begin{pmatrix} a & -b \\ -c & d \end{pmatrix} \in \Gamma, \tag{4.4}$$

where $\sigma(\gamma) = \pm 1$. Note that the signs $\sigma(\gamma)$ are irrelevant in the case of the inhomogeneous modular group $\bar{\Gamma}$ since γ is identified with $-\gamma$, and therefore eq. (4.4) uniquely determines the automorphism $u(\gamma)$. This is no longer the case for the full modular group Γ , and one has to treat the signs carefully.

Since u is an automorphism, it is sufficient to define its action on the group generators. From eq. (4.4) one has:

$$u(S) = \sigma(S) S^{-1}, \quad u(T) = \sigma(T) T^{-1}, \quad u(R) = \sigma(R) R. \tag{4.5}$$

The fact that $u(\gamma)$ is an automorphism implies $u(R) \neq \mathbb{1} = -R$, and so $\sigma(R) = +1$ and $u(R) = +R$. Furthermore, the signs $\sigma(\gamma)$ must be chosen in a way consistent with the group relations in (2.3). In particular, one finds:

$$(ST)^3 = \mathbb{1} \xrightarrow{u} (\sigma(S)\sigma(T))^3 (TS)^{-3} = \mathbb{1}, \tag{4.6}$$

implying that $\sigma(S) = \sigma(T)$, since $(TS)^3 = \mathbb{1}$. Thus, from the outset, two different outer automorphisms may be realised (see also [78]):

$$(\text{CP}_1) u : \quad u(S) = S^{-1}, \quad u(T) = T^{-1}, \quad u(R) = R, \tag{4.7}$$

$$(\text{CP}_2) u' : \quad u'(S) = -S^{-1}, \quad u'(T) = -T^{-1}, \quad u'(R) = R. \tag{4.8}$$

We note that $S^{-1} = -S$.

4.1. CP₁

The first option (4.7), which we call CP₁, corresponds to a trivial sign choice $\sigma(\gamma) = +1$ and therefore admits an explicit formula for generic γ :

$$u : \begin{pmatrix} a & b \\ c & d \end{pmatrix} \rightarrow \begin{pmatrix} a & -b \\ -c & d \end{pmatrix}. \tag{4.9}$$

This automorphism can be realised as a similarity transformation within $GL(2, \mathbb{Z})$:

$$u(\gamma) = \text{CP}_1 \gamma \text{CP}_1^{-1} \quad \text{with} \quad \text{CP}_1 = \begin{pmatrix} 1 & 0 \\ 0 & -1 \end{pmatrix} \notin \Gamma. \quad (4.10)$$

Applying the chain $\text{CP}_1 \rightarrow \gamma \rightarrow \text{CP}_1^{-1}$ to the matter field ψ , which transforms under Γ and CP as in eqs. (2.5) and (4.1), one arrives at the *gCP consistency condition* on the matrix X :

$$X \rho^*(\gamma) X^{-1} = \rho(u(\gamma)) \quad \forall \gamma \in \Gamma, \quad (4.11)$$

or, equivalently,

$$X \rho^*(S) X^{-1} = \rho^{-1}(S), \quad X \rho^*(T) X^{-1} = \rho^{-1}(T) \quad (4.12)$$

(see also [59]), which coincide with the corresponding expressions in the case of $\bar{\Gamma}$ [47].

In a basis where S and T are represented by symmetric matrices, eq. (4.12) is satisfied by the canonical CP transformation $X = \mathbb{1}$ [47]. Such a basis exists for all irreducible representations of the inhomogeneous finite modular groups Γ_N with $N = 2, 3, 4, 5$ (see [47] and references therein) and $N = 7$ [40], as well as for all irreps of the homogeneous modular groups Γ'_3 and Γ'_4 (see Appendix C.2).⁹ This means that CP_1 allows to define a CP transformation consistently and uniquely for all irreps of the aforementioned finite modular groups, hence u acts as a class-inverting automorphism on these groups [79].¹⁰

The action of CP_1 on fields (and τ) obeys $\text{CP}_1^2 = \mathbb{1}$, since $\psi_i(x) \xrightarrow{\text{CP}_1^2} (XX^*)_{ij} \psi_j(x)$ and $X = \mathbb{1} \Rightarrow XX^* = \mathbb{1}$ in the symmetric basis. It further follows that X is symmetric in any representation basis [47]. The modular group $\Gamma = SL(2, \mathbb{Z})$ is then extended to

$$\begin{aligned} GL(2, \mathbb{Z}) &\simeq SL(2, \mathbb{Z}) \rtimes \mathbb{Z}_2^{\text{CP}_1} \\ &= \langle S, T, R, \text{CP}_1 \mid S^2 = R, (ST)^3 = R^2 = \text{CP}_1^2 = \mathbb{1}, RT = TR, \\ &\quad \text{CP}_1 S \text{CP}_1^{-1} = S^{-1}, \text{CP}_1 T \text{CP}_1^{-1} = T^{-1} \rangle. \end{aligned} \quad (4.13)$$

Finally, in a basis where S and T are symmetric, where Clebsch-Gordan coefficients are real and with modular multiplets normalised to satisfy $Y(-\tau^*) = Y^*(\tau)$,¹¹ the requirement of CP_1 invariance reduces to reality of the couplings [47], i.e. of the numerical coefficients in front of the independent singlets in eq. (2.13). In such theories, CP symmetry is broken spontaneously by the VEV of the modulus τ , thus providing a common origin of CP and flavour symmetry violation. We will make use of CP_1 in the upcoming phenomenological examples of Section 6.

4.2. CP_2

Let us now discuss the second possibility (4.8) for the modular group outer automorphism, u' . This choice, which we call CP_2 , is formally defined by

⁹ One can obtain a symmetric basis for Γ'_3 starting from the one typically considered in the literature [67] and performing a change of basis for all 2-dimensional irreps via the matrix $\text{diag}(e^{-7i\pi/12}, 1)$.

¹⁰ Note however that, at the level of the full modular group, u is not class-inverting. Taking for instance $\gamma = \begin{pmatrix} 11 & 9 \\ 17 & 14 \end{pmatrix}$, one can show that $u(\gamma)$ and γ^{-1} are not in the same $SL(2, \mathbb{Z})$ conjugacy class, via e.g. the LLS invariant of Ref. [80].

¹¹ It is possible to meet these conditions for the aforementioned homogeneous and inhomogeneous finite modular groups. In Section 3.4 of Ref. [47] it is shown that the choice $Y(-\tau^*) = Y^*(\tau)$ is possible if Clebsch-Gordan coefficients are real and one has at most one copy of each irrep at lowest weight. While for Γ_7 this last condition is not met (cf. Ref. [40]), one can check that the modular multiplets also satisfy $Y(-\tau^*) = Y^*(\tau)$ in the appropriate basis.

$$u'(\gamma) = \text{CP}_2 \gamma \text{CP}_2^{-1}, \tag{4.14}$$

but cannot be realised as a similarity transformation within $GL(2, \mathbb{Z})$. It leads to a different consistency condition on the matrix X , namely:

$$X \rho^*(\gamma) X^{-1} = \sigma(\gamma)^k \rho(u'(\gamma)) \quad \forall \gamma \in \Gamma, \tag{4.15}$$

or, in terms of the generators S and T ,

$$X \rho^*(S) X^{-1} = (-1)^k \rho(R) \rho^{-1}(S), \quad X \rho^*(T) X^{-1} = (-1)^k \rho(R) \rho^{-1}(T), \tag{4.16}$$

which are equivalent to (4.15), since $\sigma(\gamma_1)\sigma(\gamma_2) = \sigma(\gamma_1\gamma_2)$.

In practice, the consistency condition (4.16) differs from that of eq. (4.12) and CP_2 differs from CP_1 only when $(-1)^k \rho(R) \neq \mathbb{1}$, i.e. whenever the matter field ψ transforms non-trivially under R . For these R -odd fields, however, it is only possible to satisfy the consistency condition if

- i) both the characters of T and S vanish, $\chi(S) = \chi(T) = 0$, which follows from eq. (4.16) after taking traces,
- ii) the dimension of the representation of ψ is even, which follows from eq. (4.16) after taking determinants, and
- iii) the level N of the finite group is even, which follows from taking the N -th power of the second relation in eq. (4.16).¹²

This means that, given a finite modular group of level N , CP_2 is incompatible with certain combinations of modular weights and irreps.

In particular, combining the groups Γ_N with $N = 3, 5, 7$ and Γ'_3 with CP_2 means that any matter field must be R -even, i.e. satisfy $(-1)^k \rho(R) = \mathbb{1}$, and transform canonically under CP , $X_{\text{CP}_2} = \mathbb{1}$, in the symmetric basis. In the case of Γ_2, Γ_4 and Γ'_4 there is the additional option to have R -odd fields, $(-1)^k \rho(R) = -\mathbb{1}$, but only for the doublet representations, all of which verify $\chi(S) = \chi(T) = 0$. These fields are constrained to transform under CP with

$$X_{\text{CP}_2} = \begin{pmatrix} 0 & 1 \\ -1 & 0 \end{pmatrix} \tag{4.17}$$

in the symmetric basis. Notice that $\text{CP}_2^2 \neq \mathbb{1}$. Instead, the action of CP_2^2 on fields, forms and τ coincides with that of R for these finite groups. Equating these two actions, the modular group is in this context minimally extended to the semidirect product¹³

$$SL(2, \mathbb{Z}) \rtimes \mathbb{Z}_2^{\text{CP}_2 S} = \langle S, T, R, \text{CP}_2 \mid S^2 = \text{CP}_2^2 = R, (ST)^3 = R^2 = \mathbb{1}, RT = TR, \text{CP}_2 S = S \text{CP}_2, \text{CP}_2 T \text{CP}_2^{-1} = R T^{-1} \rangle. \tag{4.18}$$

Keeping our focus on Γ_2, Γ_4 , and Γ'_4 , with their respective symmetric bases and Clebsch-Gordan coefficients given in Ref. [47] and Appendix C, let us briefly comment on the consequences of implementing CP_2 for the couplings in the superpotential W . We start by writing the latter as a sum of independent singlets,

¹² An associated fact is that $\Gamma(N)$ with $N \geq 2$ is only stable under u' for even N .

¹³ The non-trivial automorphism defining this outer semidirect product is $\gamma \mapsto \text{CP}_2 S \gamma S^{-1} \text{CP}_2^{-1}$.

$$W \supset \sum_s g_s (Y_s(\tau) \psi_1 \dots \psi_n)_{\mathbf{1},s}, \tag{4.19}$$

where $Y_s(\tau)$ are modular multiplets of a certain weight and irrep, and g_s are complex coupling constants. To be non-vanishing, each term must contain an even number of R -odd fields ψ_i , if any, which are in doublet representations of the finite groups at hand. Taking ψ_i to be R -odd for $i \leq 2m$ and R -even for $i > 2m$, with m being a non-negative integer such that $2m \leq n$, one can explicitly check that

$$\begin{aligned} & g_s (Y_s(\tau) \psi_1 \dots \psi_{2m} \psi_{2m+1} \dots \psi_n)_{\mathbf{1},s} \\ \xrightarrow{\text{CP}_2} & g_s (Y_s(-\tau^*) (X_{\text{CP}_2} \bar{\psi}_1) \dots (X_{\text{CP}_2} \bar{\psi}_{2k}) \bar{\psi}_{2m+1} \dots \bar{\psi}_n)_{\mathbf{1},s} \\ & = g_s (Y_s(\tau) (X_{\text{CP}_2} \psi_1) \dots (X_{\text{CP}_2} \psi_{2m}) \psi_{2m+1} \dots \psi_n)_{\mathbf{1},s} \\ & = \pm g_s (Y_s(\tau) \psi_1 \dots \psi_n)_{\mathbf{1},s}, \end{aligned} \tag{4.20}$$

where we have used the reality and symmetry properties of the Clebsch-Gordan coefficients.¹⁴ Under CP_2 , a term in eq. (4.19) transforms into the conjugate of

$$\pm g_s^* (Y_s(\tau) \psi_1 \dots \psi_n)_{\mathbf{1},s}, \tag{4.21}$$

which should coincide with the original term. The independence of singlets then implies the constraint $g_s = \pm g_s^*$, meaning that all coupling constants g_s have to be real or purely imaginary (depending on the sign) to conserve CP.

It should be noted that it is difficult to build phenomenologically viable models of fermion masses and mixing exploiting the novelty of CP_2 with R -odd fields, as i) the choice of irreps for such fields is quite limited and ii) the R -odd and R -even sectors are segregated by the \mathbb{Z}_2^R symmetry. Taken together, these facts imply the vanishing of some mixing angles or masses in simple models based on the combination of the novel CP_2 with Γ_2 , Γ_4 , or Γ'_4 . We will not pursue this model-building avenue in what follows.

5. Residual symmetries

Modular symmetry is spontaneously broken by the VEV of the modulus τ : in fact, there is no value of τ which is left invariant by the modular group action (2.4). However, certain values of τ (called *symmetric* or *fixed points*) break the modular group Γ only partially, with the unbroken generators giving rise to *residual symmetries* [33]. These unbroken symmetries can play an important role in flavour model building [18,25].

To classify the possible residual symmetries, one first notices that with a proper “gauge choice” τ can always be restricted to the *fundamental domain* \mathcal{D} of the modular group Γ :

$$\mathcal{D} \equiv \left\{ \tau \in \mathcal{H} : -\frac{1}{2} \leq \text{Re } \tau < \frac{1}{2}, |\tau| > 1 \right\} \cup \left\{ \tau \in \mathcal{H} : -\frac{1}{2} < \text{Re } \tau \leq 0, |\tau| = 1 \right\}, \tag{5.1}$$

which describes all possible values of τ up to a modular transformation (see Fig. 1). Note that, by convention, the right half of the boundary $\partial\mathcal{D}$ is not included into \mathcal{D} , since it is related to the left half by suitable modular transformations.

In the fundamental domain \mathcal{D} , there exist only three symmetric points, namely [33]:

¹⁴ For each pair of R -odd doublets, $(X_{\text{CP}_2} \psi_i \otimes X_{\text{CP}_2} \psi_j)_{\mathbf{r}} = \pm (\psi_i \otimes \psi_j)_{\mathbf{r}}$, where the sign depends on \mathbf{r} .

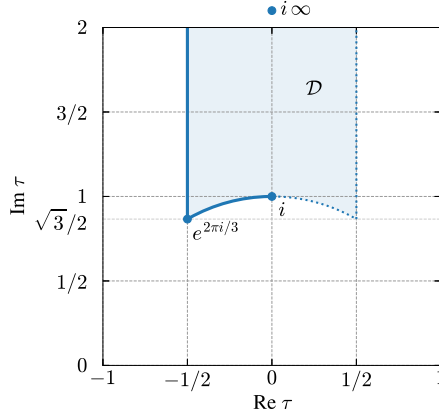


Fig. 1. The fundamental domain \mathcal{D} of the modular group Γ , and its three symmetric points $\tau_C = i$, $\tau_L = e^{2\pi i/3}$ and $\tau_T = i\infty$.

- i) $\tau_C \equiv i$ invariant under S ;
- ii) $\tau_L \equiv -1/2 + i\sqrt{3}/2$ (“the left cusp”) invariant under ST ;
- iii) $\tau_T \equiv i\infty$ invariant under T .

In addition, the R generator is unbroken for any value of τ . Finally, if a theory is also CP-invariant (i.e. its couplings satisfy the constraints discussed in Section 4), then the CP symmetry is spontaneously broken by any $\tau \in \mathcal{D}$ except for the values lying on the fundamental domain boundary or the imaginary axis [47]:

- i) $\text{Re } \tau = 0$ (the imaginary axis) is invariant under CP;
- ii) $\text{Re } \tau = -1/2$ (the left vertical boundary) is invariant under CPT;
- iii) $|\tau| = 1$ (the boundary arc) is invariant under CPS.

Recall that CP always acts on τ as in eq. (4.2), meaning the above statement does not depend on the choice of CP automorphism (CP₁ vs. CP₂).

For a given value of τ , the residual symmetry group is simply a group generated by the unbroken transformations subject to relations which can be deduced from eqs. (4.13), (4.18). For instance, the symmetric point $\tau = i$ is invariant under S , R and CP₁ in the case of the full modular group Γ enhanced by CP₁. The corresponding symmetry group is

$$\langle S, R, \text{CP}_1 \rangle = \left\langle S, \text{CP}_1 \mid S^4 = \mathbb{1}, \text{CP}_1^2 = \mathbb{1}, \text{CP}_1 S \text{CP}_1^{-1} = S^{-1} \right\rangle \simeq D_4, \tag{5.2}$$

where D_4 is the dihedral group of order 8 (the symmetry group of a square). One can find the residual symmetry groups for other values of τ in a similar fashion; we collect the results in Table 2.

When considering finite modular versions $\Gamma_N^{(\prime)}$ of the modular group, the residual symmetry groups may be reduced, due to the extra relation $T^N = \mathbb{1}$ (recall that for $N > 5$ further constraints are present). For $N \leq 5$, the instances of \mathbb{Z}^T in Table 2 should be replaced by \mathbb{Z}_N^T .

Since every symmetric point outside the fundamental domain \mathcal{D} is physically equivalent to a symmetric point inside \mathcal{D} , its residual symmetry group is isomorphic to one of the groups listed in Table 2. For instance, “the right cusp” $\tau_R \equiv 1/2 + i\sqrt{3}/2$ is related to the left cusp as

Table 2

Residual symmetry groups for different values of τ and different choices of the full symmetry group.

	Γ	$\bar{\Gamma}$	$\Gamma \rtimes \text{CP}_1$	$\Gamma \rtimes \text{CP}_2$	$\bar{\Gamma} \rtimes \text{CP}$
$\tau = i$	\mathbb{Z}_4^S	\mathbb{Z}_2^S	$\mathbb{Z}_4^S \rtimes \mathbb{Z}_2^{\text{CP}_1} \simeq D_4$	$\mathbb{Z}_4^S \times \mathbb{Z}_2^{\text{CP}_2 S}$	$\mathbb{Z}_2^S \times \mathbb{Z}_2^{\text{CP}}$
$\tau = e^{2\pi i/3}$	$\mathbb{Z}_3^{ST} \times \mathbb{Z}_2^R$	\mathbb{Z}_3^{ST}	$(\mathbb{Z}_3^{ST} \rtimes \mathbb{Z}_2^{\text{CP}_1 T}) \times \mathbb{Z}_2^R$ $\simeq S_3 \times \mathbb{Z}_2 \simeq D_6$	$(\mathbb{Z}_3^{ST} \rtimes \mathbb{Z}_2^{\text{CP}_2 T}) \times \mathbb{Z}_2^R$ $\simeq S_3 \times \mathbb{Z}_2 \simeq D_6$	$\mathbb{Z}_3^{ST} \rtimes \mathbb{Z}_2^{\text{CP} T}$ $\simeq S_3$
$\tau = i\infty$	$\mathbb{Z}^T \times \mathbb{Z}_2^R$	\mathbb{Z}^T	$(\mathbb{Z}^T \rtimes \mathbb{Z}_2^{\text{CP}_1}) \times \mathbb{Z}_2^R$	$(\mathbb{Z}^T \times \mathbb{Z}_2^R) \rtimes \mathbb{Z}_2^{\text{CP}_2 T}$	$\mathbb{Z}^T \rtimes \mathbb{Z}_2^{\text{CP}}$
$\text{Re } \tau = 0$	\mathbb{Z}_2^R	1	$\mathbb{Z}_2^{\text{CP}_1} \times \mathbb{Z}_2^R$	$\mathbb{Z}_4^{\text{CP}_2}$	\mathbb{Z}_2^{CP}
$ \tau = 1$	\mathbb{Z}_2^R	1	$\mathbb{Z}_2^{\text{CP}_1 S} \times \mathbb{Z}_2^R$	$\mathbb{Z}_2^{\text{CP}_2 S} \times \mathbb{Z}_2^R$	$\mathbb{Z}_2^{\text{CP} S}$
$\text{Re } \tau = -\frac{1}{2}$	\mathbb{Z}_2^R	1	$\mathbb{Z}_2^{\text{CP}_1 T} \times \mathbb{Z}_2^R$	$\mathbb{Z}_2^{\text{CP}_2 T} \times \mathbb{Z}_2^R$	$\mathbb{Z}_2^{\text{CP} T}$
generic τ	\mathbb{Z}_2^R	1	\mathbb{Z}_2^R	\mathbb{Z}_2^R	1

$\tau_R = T \tau_L$, so the residual symmetry group at τ_R is isomorphic to that at τ_L , and the isomorphism is given by a conjugation with T^{-1} . In particular, the unbroken generators are mapped as $ST \rightarrow T(ST)T^{-1} = TS$, $R \rightarrow TRT^{-1} = R$ and $\text{CPT} \rightarrow T(\text{CPT})T^{-1} = T\text{CP}$.

6. Phenomenology

To illustrate how the results of the previous sections can be applied to model building, we now consider examples of S'_4 modular-invariant models of lepton flavour. As in previous bottom-up works, the Kähler potential is taken to be

$$K(\tau, \bar{\tau}, \psi, \bar{\psi}) = -\Lambda_0^2 \log(-i\tau + i\bar{\tau}) + \sum_I \frac{|\psi_I|^2}{(-i\tau + i\bar{\tau})^{k_I}}, \tag{6.1}$$

with Λ_0 having mass dimension one.

6.1. Weinberg operator model

We first assume that neutrino masses are generated from the Weinberg operator, and assign both lepton doublets L and charged lepton singlets E^c to full triplets of the discrete flavour group. Such an assignment provides a justification for three lepton generations and contrasts with most previous bottom-up modular approaches to flavour. The relevant superpotential is

$$W = \sum_s \alpha_s \left(Y_{\mathbf{r}_s}^{(k_Y)}(\tau) E^c L H_d \right)_{\mathbf{1},s} + \frac{1}{\Lambda} \sum_s g_s \left(Y_{\mathbf{r}_s}^{(k_W)}(\tau) L^2 H_u^2 \right)_{\mathbf{1},s}, \tag{6.2}$$

where one has summed over independent singlets s .

In particular, we take $L \sim \mathbf{3}$ with weight $k_L = 2$, and $E^c \sim \hat{\mathbf{3}}$ with weight $k_{E^c} = 1$. Higgs doublets H_u and H_d are assumed to be S'_4 trivial singlets of zero modular weight. To compensate the modular weights of field monomials, the modular forms entering the Weinberg term need to have weight $k_W = 4$, while those in the Yukawa term need instead $k_Y = 3$. Note that E^c transforms with an odd modular weight and in an irrep which is absent from the usual $\Gamma_4 \simeq S_4$ modular construction. Aiming at a minimal and predictive example, we further impose a gCP symmetry (CP_1 , see Section 4) on the model. Then, eq. (6.2) explicitly reads

$$\begin{aligned}
 W = & \alpha_1 \left(Y_{\mathbf{1}'}^{(3)} E^c L \right)_1 H_d + \alpha_2 \left(Y_{\mathbf{3}'}^{(3)} E^c L \right)_1 H_d + \alpha_3 \left(Y_{\mathbf{3}}^{(3)} E^c L \right)_1 H_d \\
 & + \frac{g_1}{\Lambda} \left(Y_{\mathbf{1}}^{(4)} L^2 \right)_1 H_u^2 + \frac{g_2}{\Lambda} \left(Y_{\mathbf{2}}^{(4)} L^2 \right)_1 H_u^2 + \frac{g_3}{\Lambda} \left(Y_{\mathbf{3}}^{(4)} L^2 \right)_1 H_u^2,
 \end{aligned} \tag{6.3}$$

where the g_s and the α_s ($s = 1, 2, 3$) are real as a result of imposing gCP in the working symmetric basis for the S'_4 group generators (see Appendix C.2). This superpotential results in the following Lagrangian, containing the mass matrices of neutrinos and charged leptons,

$$\mathcal{L} \supset -\frac{1}{2} (M_\nu)_{ij} \overline{v_{iR}^c} v_{jL} - (M_e)_{ij} \overline{e_{iL}} e_{jR} + \text{h.c.}, \tag{6.4}$$

which is written in terms of four-spinors, with $\langle H_u \rangle = (0, v_u)^T$, $\langle H_d \rangle = (v_d, 0)^T$, and $v_{iR}^c \equiv C \overline{v_{iL}}^T$, C being the charge conjugation matrix. The matrices M_ν and M_e can be obtained from eq. (6.3) and read¹⁵:

$$\begin{aligned}
 \frac{1}{2v_u^2} M_\nu = & \frac{1}{\sqrt{3}} \frac{g_1}{\Lambda} \begin{pmatrix} Y_1 & 0 & 0 \\ 0 & 0 & Y_1 \\ 0 & Y_1 & 0 \end{pmatrix}_{Y_{\mathbf{1}'}^{(4)}} - \frac{1}{2\sqrt{3}} \frac{g_2}{\Lambda} \begin{pmatrix} 2Y_1 & 0 & 0 \\ 0 & \sqrt{3}Y_2 & -Y_1 \\ 0 & -Y_1 & \sqrt{3}Y_2 \end{pmatrix}_{Y_{\mathbf{2}}^{(4)}} \\
 & + \frac{1}{\sqrt{6}} \frac{g_3}{\Lambda} \begin{pmatrix} 0 & -Y_2 & Y_3 \\ -Y_2 & -Y_1 & 0 \\ Y_3 & 0 & Y_1 \end{pmatrix}_{Y_{\mathbf{3}}^{(4)}},
 \end{aligned} \tag{6.5}$$

and

$$\begin{aligned}
 \frac{1}{v_d} M_e^\dagger = & \frac{\alpha_1}{\sqrt{3}} \begin{pmatrix} Y_1 & 0 & 0 \\ 0 & 0 & Y_1 \\ 0 & Y_1 & 0 \end{pmatrix}_{Y_{\mathbf{1}'}^{(3)}} + \frac{\alpha_2}{\sqrt{6}} \begin{pmatrix} 0 & -Y_2 & Y_3 \\ -Y_2 & -Y_1 & 0 \\ Y_3 & 0 & Y_1 \end{pmatrix}_{Y_{\mathbf{3}'}^{(3)}} \\
 & + \frac{\alpha_3}{\sqrt{6}} \begin{pmatrix} 0 & Y_3 & -Y_2 \\ -Y_3 & 0 & Y_1 \\ Y_2 & -Y_1 & 0 \end{pmatrix}_{Y_{\mathbf{3}}^{(3)}}.
 \end{aligned} \tag{6.6}$$

In the above, the $Y_{\mathbf{r}}^{(k)}$ subscript attached to each matrix denotes the modular form multiplet Y to be used within that matrix. The explicit expressions for these mass matrices in terms of the θ and ε functions are given in Appendix E.

Notice that the 13 independent Y_i are all determined once the value of the complex modulus τ is specified. Hence, this model contains 8 real parameters (6 real couplings and τ) while aiming to explain 12 observables (3 charged-lepton masses, 3 neutrino masses, 3 mixing angles, and 3 CPV phases). Since 8 of these observables are rather well-determined, one expects to predict within the model the lightest neutrino mass and the Dirac CPV phase δ , as well as the Majorana phases α_{21} and α_{31} , and hence the effective Majorana mass $|\langle m \rangle|$ entering the expression for the rate of neutrinoless double beta ($(\beta\beta)_{0\nu^-}$)-decay [1].

The functions $\theta(\tau)$ and $\varepsilon(\tau)$ are particularly well suited to analyse models in the ‘‘vicinity’’ of the symmetric point $\tau_T = i\infty$, i.e. for models where $\text{Im } \tau$ is large. In this case, one can use $\varepsilon(\tau)$

¹⁵ We have kept in these expressions the canonical Clebsch-Gordan normalisations, included in Appendix C.3.

as an expansion parameter and obtain the approximate forms of the neutrino and charged-lepton mass matrices given above¹⁶:

$$M_\nu \simeq \frac{v_u^2 g_1 \theta^8}{3 \Lambda} \begin{pmatrix} 1 - \frac{\sqrt{3}}{2} \tilde{g}_2 & -\frac{3\sqrt{3}}{2} \tilde{g}_3 \left(\frac{\varepsilon}{\theta}\right)^3 & -\frac{3\sqrt{3}}{2} \tilde{g}_3 \frac{\varepsilon}{\theta} \\ * & -3\sqrt{3} \left(\tilde{g}_2 + \frac{\tilde{g}_3}{\sqrt{2}}\right) \left(\frac{\varepsilon}{\theta}\right)^2 & 1 + \frac{\sqrt{3}}{4} \tilde{g}_2 \\ * & * & -3\sqrt{3} \left(\tilde{g}_2 - \frac{\tilde{g}_3}{\sqrt{2}}\right) \left(\frac{\varepsilon}{\theta}\right)^2 \end{pmatrix}, \quad (6.7)$$

$$M_e^\dagger \simeq v_d \alpha_1 \theta^6 \begin{pmatrix} \frac{\varepsilon}{\theta} & -\frac{1}{2\sqrt{6}} \left(\tilde{\alpha}_2 - \frac{\tilde{\alpha}_3}{\sqrt{2}}\right) & -\frac{1}{2} \sqrt{\frac{3}{2}} \left(\tilde{\alpha}_2 + \frac{5\tilde{\alpha}_3}{3\sqrt{2}}\right) \left(\frac{\varepsilon}{\theta}\right)^2 \\ -\frac{1}{2\sqrt{6}} \left(\tilde{\alpha}_2 + \frac{\tilde{\alpha}_3}{\sqrt{2}}\right) & \frac{2}{\sqrt{3}} \tilde{\alpha}_2 \left(\frac{\varepsilon}{\theta}\right)^3 & \left(1 + \frac{\tilde{\alpha}_3}{\sqrt{6}}\right) \frac{\varepsilon}{\theta} \\ -\frac{1}{2} \sqrt{\frac{3}{2}} \left(\tilde{\alpha}_2 - \frac{5\tilde{\alpha}_3}{3\sqrt{2}}\right) \left(\frac{\varepsilon}{\theta}\right)^2 & \left(1 - \frac{\tilde{\alpha}_3}{\sqrt{6}}\right) \frac{\varepsilon}{\theta} & -\frac{2}{\sqrt{3}} \tilde{\alpha}_2 \left(\frac{\varepsilon}{\theta}\right)^3 \end{pmatrix}, \quad (6.8)$$

where we have omitted $O(\varepsilon^4/\theta^4)$ corrections, included in full in Appendix E. In the above expressions, we have further defined $\tilde{g}_{2(3)} = g_{2(3)}/g_1$ and $\tilde{\alpha}_{2(3)} \equiv \alpha_{2(3)}/\alpha_1$.

The statistical analysis, the details and results of which will be reported in subsection 6.3, shows that a successful description of the neutrino oscillation data and of charged-lepton masses can be achieved for a value of τ close to $\tau_C = i$ for NO, and close to 1.6 i for IO. In both cases, one cannot rely on the approximations used in eqs. (6.7) and (6.8), and the full expressions given in Appendix E are required.

6.2. Type I seesaw model

We now assume instead that neutrino masses are generated from interactions with gauge singlets N^c in a type I seesaw, taking $L \sim \hat{\mathbf{3}}$ with weight $k_L = 4$, $E^c \sim \mathbf{3}$ with weight $k_L = -1$, and $N^c \sim \mathbf{2}$ with weight $k_L = 1$. Once more, Higgs doublets H_u and H_d are assumed to be trivial S'_4 singlets of zero modular weight. The modular forms entering the Majorana mass term need to have weights $k_M = 2$, while those in the Yukawa terms of charged leptons and neutrinos need $k_{Y_E} = 3$ and $k_{Y_N} = 5$, respectively. Note that here both E^c and N^c transform with odd modular weights, while L transforms in an irrep which is absent from $\Gamma_4 \simeq S_4$. We further impose a gCP symmetry (CP_1) on the model, whose superpotential reads:

$$\begin{aligned} W = & \alpha_1 \left(Y_{\hat{\mathbf{1}}'}^{(3)} E^c L\right)_1 H_d + \alpha_2 \left(Y_{\hat{\mathbf{3}}'}^{(3)} E^c L\right)_1 H_d + \alpha_3 \left(Y_{\hat{\mathbf{3}}}^{(3)} E^c L\right)_1 H_d \\ & + g_1 \left(Y_{\hat{\mathbf{3}}'}^{(5)} N^c L\right)_1 H_u + g_2 \left(Y_{\hat{\mathbf{3},1}}^{(5)} N^c L\right)_1 H_u + g_3 \left(Y_{\hat{\mathbf{3},2}}^{(5)} N^c L\right)_1 H_u \\ & + \Lambda_1 \left(Y_{\hat{\mathbf{2}}}^{(2)} N^c N^c\right)_1, \end{aligned} \quad (6.9)$$

¹⁶ We use stars to denote repeated elements of a symmetric matrix.

where Λ_1 , the g_s and the α_s ($s = 1, 2, 3$) are real, given the working symmetric basis. This superpotential can be cast in the form

$$W = \lambda_{ij} E_i^c L_j H_d + \mathcal{Y}_{ij} N_i^c L_j + \frac{1}{2} M_{ij} N_i^c N_j^c, \quad (6.10)$$

with

$$M = \Lambda_1 \begin{pmatrix} -Y_1 & Y_2 \\ Y_2 & Y_1 \end{pmatrix}_{Y_2^{(2)}}, \quad (6.11)$$

and

$$\begin{aligned} \mathcal{Y} = & \frac{g_1}{2\sqrt{3}} \begin{pmatrix} 2Y_1 & -Y_3 & -Y_2 \\ 0 & \sqrt{3}Y_2 & \sqrt{3}Y_3 \end{pmatrix}_{Y_{\dot{3}}^{(5)}} + \frac{g_2}{2\sqrt{3}} \begin{pmatrix} 0 & \sqrt{3}Y_2 & \sqrt{3}Y_3 \\ -2Y_1 & Y_3 & Y_2 \end{pmatrix}_{Y_{\dot{3},1}^{(5)}} \\ & + \frac{g_3}{2\sqrt{3}} \begin{pmatrix} 0 & \sqrt{3}Y_2 & \sqrt{3}Y_3 \\ -2Y_1 & Y_3 & Y_2 \end{pmatrix}_{Y_{\dot{3},2}^{(5)}}. \end{aligned} \quad (6.12)$$

In the conventions of eq. (6.4), the light neutrino mass matrix M_ν is then obtained from the seesaw relation,

$$M_\nu = -v_u^2 \mathcal{Y}^T M^{-1} \mathcal{Y}, \quad (6.13)$$

while the charged-lepton mass matrix $M_e = v_d \lambda^\dagger$ is given by eq. (6.6) with $\alpha_3 \rightarrow -\alpha_3$. Note that, due to the seesaw relation (6.13), changes in the scale of the g_s can be compensated by adjusting the scale of Λ_1 . Hence, this model is effectively described by 8 real parameters at low energy (6 real combinations of couplings and τ).

6.3. Numerical analysis and results

Our models are constrained by the observed ratios of charged-lepton masses, neutrino mass-squared differences, and leptonic mixing angles. The experimental best fit values and 1σ ranges considered for these observables are collected in Table 3. We do not take into account the 1σ range of the Dirac CPV phase δ in our fit. As a measure of goodness of fit, we use $N\sigma \equiv \sqrt{\Delta\chi^2}$, where $\Delta\chi^2$ is approximated as a sum of one-dimensional chi-squared projections. The reader is referred to Ref. [33] for further details on the numerical procedure.

Through numerical search, we find that the model of subsection 6.1 can lead to acceptable fits of the leptonic sector ($N\sigma \simeq 0.07$), with the values of τ , α_i and g_i indicated in Tables 4 and 5 for NO and IO, respectively. The phenomenologically viable region in the τ plane is shown, for both orderings, in Fig. 2. While for IO the fit is possible with $\tau \simeq 1.6i$, for NO an annular region close to $\tau_C = i$ is selected, with $|\tau - i| \simeq 0.12$. As one can see from the tables, independent singlets in the superpotential of eq. (6.3) can provide comparable contributions to the mass matrices. There is however some fine-tuning present in the coupling constants α_i in order to accommodate charged-lepton mass hierarchies.

This model additionally predicts peculiar correlations between observables, which are shown in Figs. 3 and 4, for NO and IO, respectively. One can see that, in the NO case, a Dirac phase δ deviated from π is tied to smaller values of the atmospheric angle, which are in turn associated with larger values of the effective Majorana mass $|\langle m \rangle|$ and of the sum of neutrino masses $\Sigma_i m_i$, i.e. with a larger absolute neutrino mass scale. In the IO case, a deviation of δ from π also

Table 3

Best fit values and 1σ ranges for neutrino oscillation parameters, obtained from the global analysis of Ref. [8], and for charged-lepton mass ratios, given at the scale 2×10^{16} GeV with the $\tan\beta$ averaging described in [12], obtained from Ref. [81]. The parameters entering the definition of r are $\delta m^2 \equiv m_2^2 - m_1^2$ and $\Delta m^2 \equiv m_3^2 - (m_1^2 + m_2^2)/2$. The best fit value and 1σ range of δ did not drive the numerical searches here reported, i.e. the value of δ does not affect the value of $N\sigma$ defined in the text.

Observable	Best fit value and 1σ range	
m_e/m_μ	0.0048 ± 0.0002	
m_μ/m_τ	0.0565 ± 0.0045	
	NO	IO
$\delta m^2/(10^{-5} \text{ eV}^2)$		$7.34^{+0.17}_{-0.14}$
$ \Delta m^2 /(10^{-3} \text{ eV}^2)$	$2.485^{+0.029}_{-0.032}$	$2.465^{+0.030}_{-0.031}$
$r \equiv \delta m^2/ \Delta m^2 $	0.0295 ± 0.0008	0.0298 ± 0.0008
$\sin^2 \theta_{12}$	$0.305^{+0.014}_{-0.013}$	$0.303^{+0.014}_{-0.013}$
$\sin^2 \theta_{13}$	$0.0222^{+0.0006}_{-0.0008}$	$0.0223^{+0.0007}_{-0.0006}$
$\sin^2 \theta_{23}$	$0.545^{+0.020}_{-0.047}$	$0.551^{+0.016}_{-0.034}$
δ/π	$1.28^{+0.38}_{-0.18}$	$1.52^{+0.13}_{-0.15}$

Table 4

Best fit values and 2σ and 3σ ranges for the parameters and observables in the fit of the S'_4 Weinberg operator model of subsection 6.1 with NO.

	Best fit value	2σ range	3σ range
Re τ	± 0.029725	$-0.11437 - 0.11437$	$-0.11597 - 0.11597$
Im τ	1.1181	$0.88795 - 1.1262$	$0.88582 - 1.1289$
$ \tau - i $	0.12174	$0.10112 - 0.12848$	$0.099153 - 0.13229$
α_2/α_1	1.7303	$1.73 - 1.7307$	$1.7299 - 1.7309$
α_3/α_1	-2.7706	$-(2.7208 - 2.8229)$	$-(2.6926 - 2.8488)$
g_2/g_1	2.716	$2.5942 - 988.3$	$2.5493 - 998.8$
g_3/g_1	-0.35786	$-(0.080198 - 5.5555)$	$-(0.073447 - 6.3885)$
$v_d \alpha_1$, GeV	1.5958	$0.9571 - 1.9425$	$0.89127 - 2.1572$
$v_u^2 g_1/\Lambda$, eV	0.076533	$0.00028142 - 0.12373$	$0.00027594 - 0.12636$
m_e/m_μ	0.0048091	$0.0044239 - 0.0051918$	$0.0042302 - 0.0053878$
m_μ/m_τ	0.056485	$0.048273 - 0.065161$	$0.043297 - 0.069358$
r	0.029554	$0.028086 - 0.030967$	$0.027394 - 0.031744$
$\delta m^2, 10^{-5} \text{ eV}^2$	7.3431	$7.0658 - 7.5968$	$6.9304 - 7.7309$
$ \Delta m^2 , 10^{-3} \text{ eV}^2$	2.4846	$2.4532 - 2.5158$	$2.4354 - 2.5299$
$\sin^2 \theta_{12}$	0.305	$0.28123 - 0.33069$	$0.26737 - 0.34545$
$\sin^2 \theta_{13}$	0.022247	$0.020754 - 0.023378$	$0.020131 - 0.024027$
$\sin^2 \theta_{23}$	0.54509	$0.48487 - 0.57838$	$0.48344 - 0.59162$
m_1 , eV	0.007377	$0.0067068 - 0.032237$	$0.0064624 - 0.032432$
m_2 , eV	0.011307	$0.010874 - 0.033328$	$0.010728 - 0.033518$
m_3 , eV	0.050752	$0.050412 - 0.059852$	$0.050227 - 0.060044$
$\Sigma_i m_i$, eV	0.069436	$0.068192 - 0.12541$	$0.067748 - 0.12594$
$ \langle m \rangle $, meV	0.63241	$0.00018464 - 28.483$	$0.00012046 - 28.547$
δ/π	± 1.0487	$0.5572 - 1.4428$	$0.55293 - 1.4471$
α_{21}/π	± 1.0395	$0.24004 - 1.76$	$0.23476 - 1.7652$
α_{31}/π	± 1.0718	$0.16644 - 1.8336$	$0.15932 - 1.8407$
$N\sigma$	0.0695		

Table 5

Best fit values and 2σ and 3σ ranges for the parameters and observables in the fit of the S'_4 Weinberg operator model of subsection 6.1 with IO.

	Best fit value	2σ range	3σ range
Re τ	∓ 0.027941	$\mp(0.019166 - 0.034317)$	$\mp(0.0091225 - 0.03702)$
Im τ	1.5921	1.539 – 1.6365	1.5185 – 1.6634
α_2/α_1	1.7266	1.7253 – 1.7278	1.7244 – 1.7284
α_3/α_1	-2.17	-(2.1304 – 2.2089)	-(2.1107 – 2.2311)
g_2/g_1	0.4705	0.42608 – 0.53039	0.39954 – 0.56815
g_3/g_1	-1.2442	-(1.0788 – 1.5506)	-(0.98527 – 1.7423)
$v_d \alpha_1$, GeV	2.4973	2.1623 – 2.9577	1.9847 – 3.2909
$v_d^2 g_1/\Lambda$, eV	0.23558	0.21555 – 0.24684	0.2085 – 0.2546
m_e/m_μ	0.0047923	0.0044167 – 0.0051648	0.0042241 – 0.0053747
m_μ/m_τ	0.05649	0.048227 – 0.065009	0.043596 – 0.069331
r	0.029756	0.028387 – 0.031155	0.027599 – 0.031907
δm^2 , 10^{-5} eV ²	7.336	7.073 – 7.5932	6.9165 – 7.7266
$ \Delta m^2 $, 10^{-3} eV ²	2.4654	2.4373 – 2.4916	2.4216 – 2.5061
$\sin^2 \theta_{12}$	0.30312	0.27799 – 0.32846	0.26532 – 0.34422
$\sin^2 \theta_{13}$	0.02225	0.021048 – 0.023615	0.0204 – 0.024279
$\sin^2 \theta_{23}$	0.55029	0.46546 – 0.5795	0.44266 – 0.59413
m_1 , eV	0.052871	0.051464 – 0.053891	0.05099 – 0.054701
m_2 , eV	0.05356	0.052179 – 0.054563	0.051716 – 0.055363
m_3 , eV	0.019147	0.015034 – 0.021806	0.01339 – 0.023755
$\Sigma_i m_i$, eV	0.12558	0.11873 – 0.13014	0.11614 – 0.1337
$ \langle m \rangle $, meV	25.024	22.877 – 28.031	21.624 – 29.217
δ/π	± 1.2172	$\pm(1.138 - 1.2892)$	$\pm(1.0635 - 1.3166)$
α_{21}/π	± 1.1906	$\pm(1.1235 - 1.2685)$	$\pm(1.0569 - 1.2995)$
α_{31}/π	± 0.31101	$\pm(0.19899 - 0.41995)$	$\pm(0.091604 - 0.46069)$
$N\sigma$	0.0699		

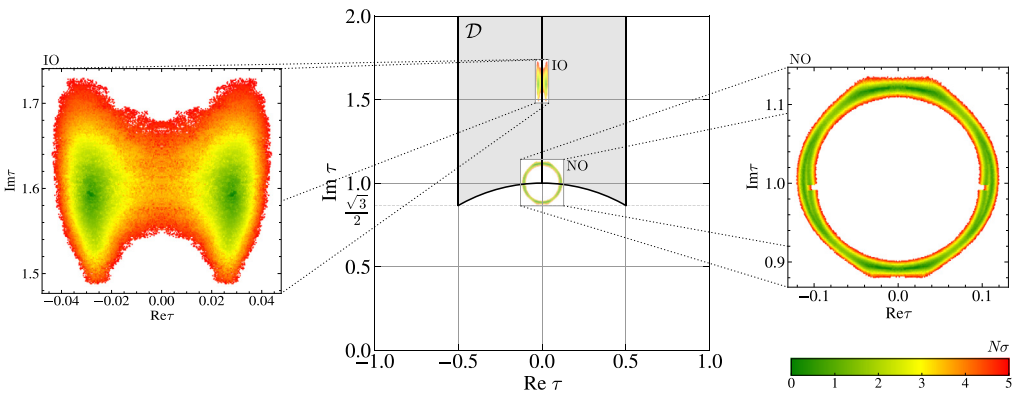


Fig. 2. Allowed regions in the τ plane for the fit of the S'_4 Weinberg operator model of subsection 6.1, for IO (left inset) and NO (right inset). Here and in what follows, the green, yellow and red colours correspond to different confidence levels, as indicated in the legend. Points in the NO case which are outside the fundamental domain \mathcal{D} are redundant, since they are equivalent to points inside \mathcal{D} via the action of S . We nevertheless keep them for illustrative purposes. (For interpretation of the colours in the figures, the reader is referred to the web version of this article.)

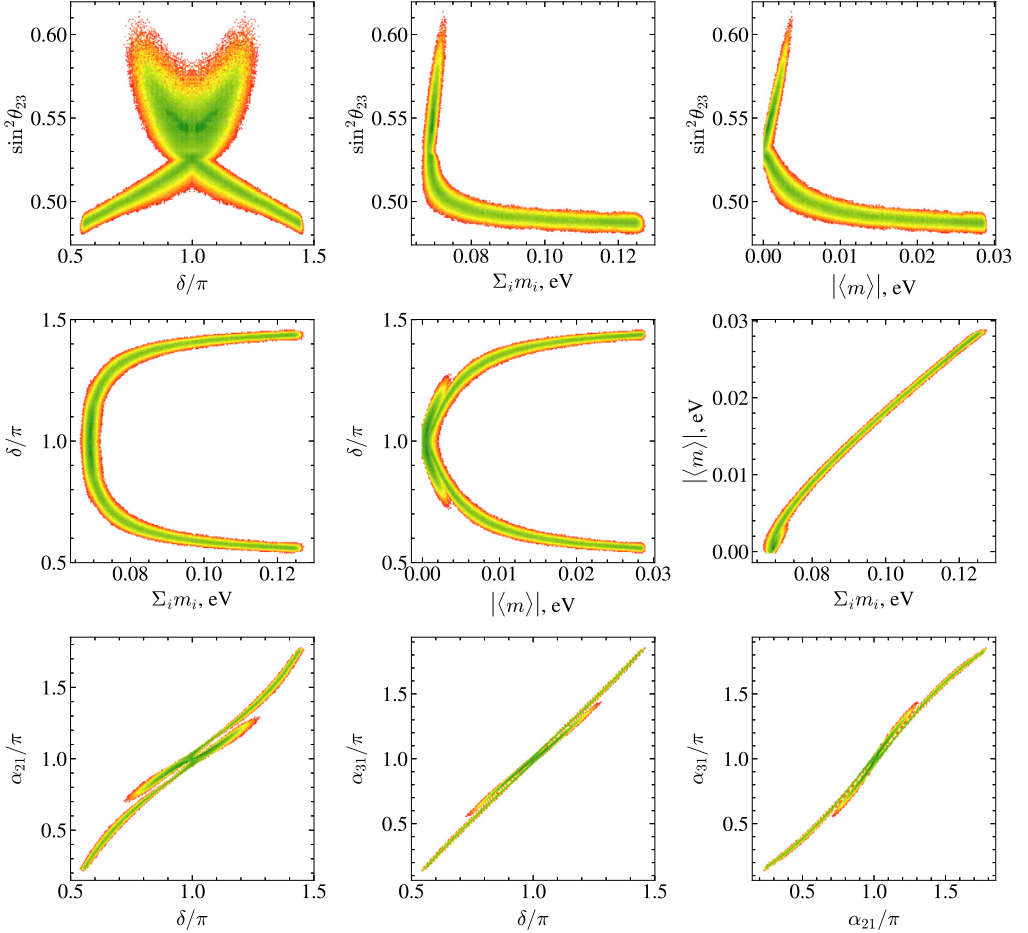


Fig. 3. Correlations between pairs of observables for the NO fit of the S'_4 Weinberg operator model of subsection 6.1.

favours smaller values of $\sin^2 \theta_{23}$. In both cases, the values of all three CPV phases are highly correlated.

Analysing instead correlations between observables and model parameters, one can verify that CP is conserved for $\text{Re } \tau = 0$, as anticipated in Section 5. Recall that, in this model, CP symmetry is spontaneously broken by the VEV of τ . The correlation between the Dirac CP phase and the value of $\text{Re } \tau$ is shown in Fig. 5 for both orderings, with δ taking a CP conserving value for purely imaginary τ , as expected. We note also that, in the case of NO, the viable fit region for the ratios g_2/g_1 and g_3/g_1 seems to be unbounded, see Fig. 6. However, correlations between g_2/g_1 and observables suggest that the limit $g_1 \rightarrow 0$ is phenomenologically viable, with larger values of the ratio not affecting the values of observables (cf. $\sin^2 \theta_{23}$ and $\langle m \rangle$ in the figure). We are then free to limit the range of the ratio g_2/g_1 to 10^3 in our numerical exploration.

Finally, let us comment on the allowed values for the effective Majorana mass $|\langle m \rangle|$ entering the expression for the rate of $(\beta\beta)_{0\nu}$ -decay. At the 3σ level, the IO fit one predicts $|\langle m \rangle| \simeq 22 - 29$ meV, while for NO one has $|\langle m \rangle| \lesssim 29$ meV (see Tables 4 and 5). In the latter case, very small values of $|\langle m \rangle|$ are allowed, contradicting a tendency of bottom-up modular-invariant

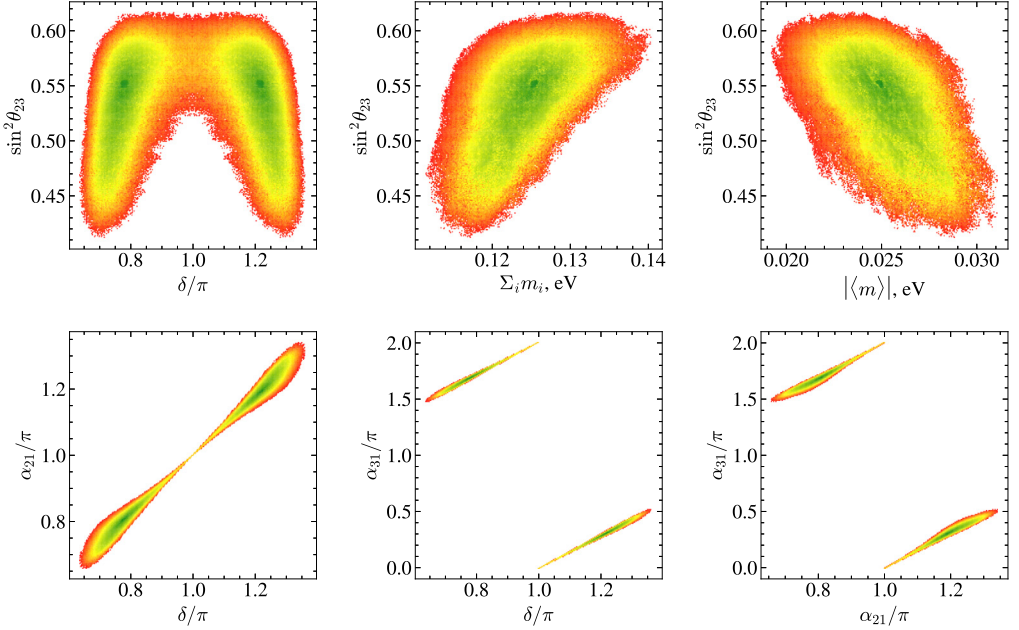


Fig. 4. Correlations between pairs of observables for the IO fit of the S'_4 Weinberg operator model of subsection 6.1.

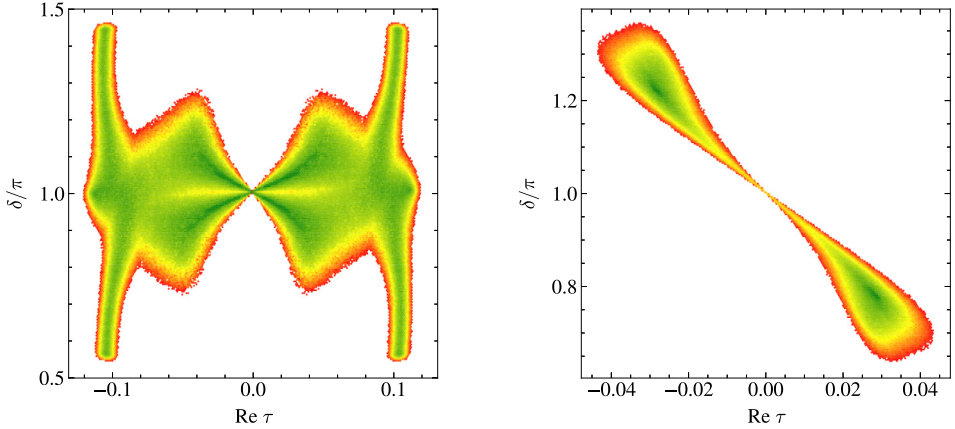


Fig. 5. Correlation between the Dirac CPV phase δ and $\text{Re } \tau$ for the NO (left) and IO (right) fits of the S'_4 Weinberg operator model of subsection 6.1.

models (see e.g. [69]). This is also the case for the NO best fit point, for which a value of $|\langle m \rangle|$ slightly below the meV is preferred. However, $|\langle m \rangle|$ can be large, $|\langle m \rangle| > 20$ meV, already at the 1.2σ level. This can, for instance, be seen in Fig. 7, where we collect the $N\sigma$ projections for different model parameters and observables.

For the seesaw model of subsection 6.2, we find that a fit of the data summarised in Table 3 is possible. As an example, the point in parameter space described by $\tau = -0.14 + 1.43i$ and

$$g_2/g_1 = -1.778, \quad g_3/g_1 = -2.433, \quad \alpha_2/\alpha_1 = 2.128, \quad \alpha_3/\alpha_1 = -2.640, \quad (6.14)$$

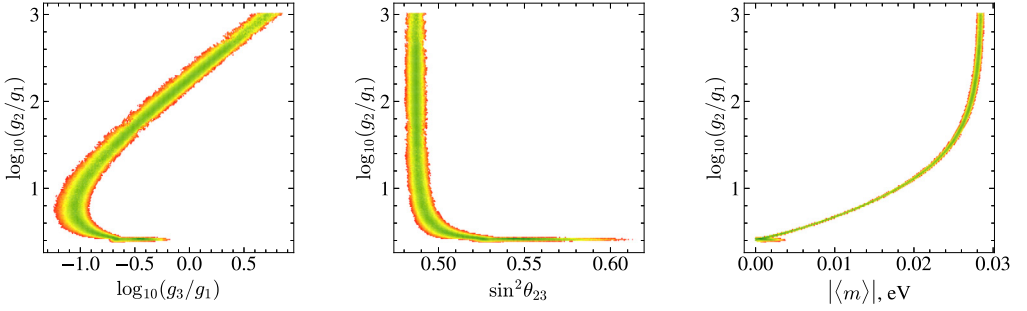


Fig. 6. Correlations of $\log_{10}(g_2/g_1)$ with $\log_{10}(g_3/g_1)$ and with the observables $\sin^2 \theta_{23}$ and $|\langle m \rangle|$ for the NO fit of the S'_4 Weinberg operator model of subsection 6.1.

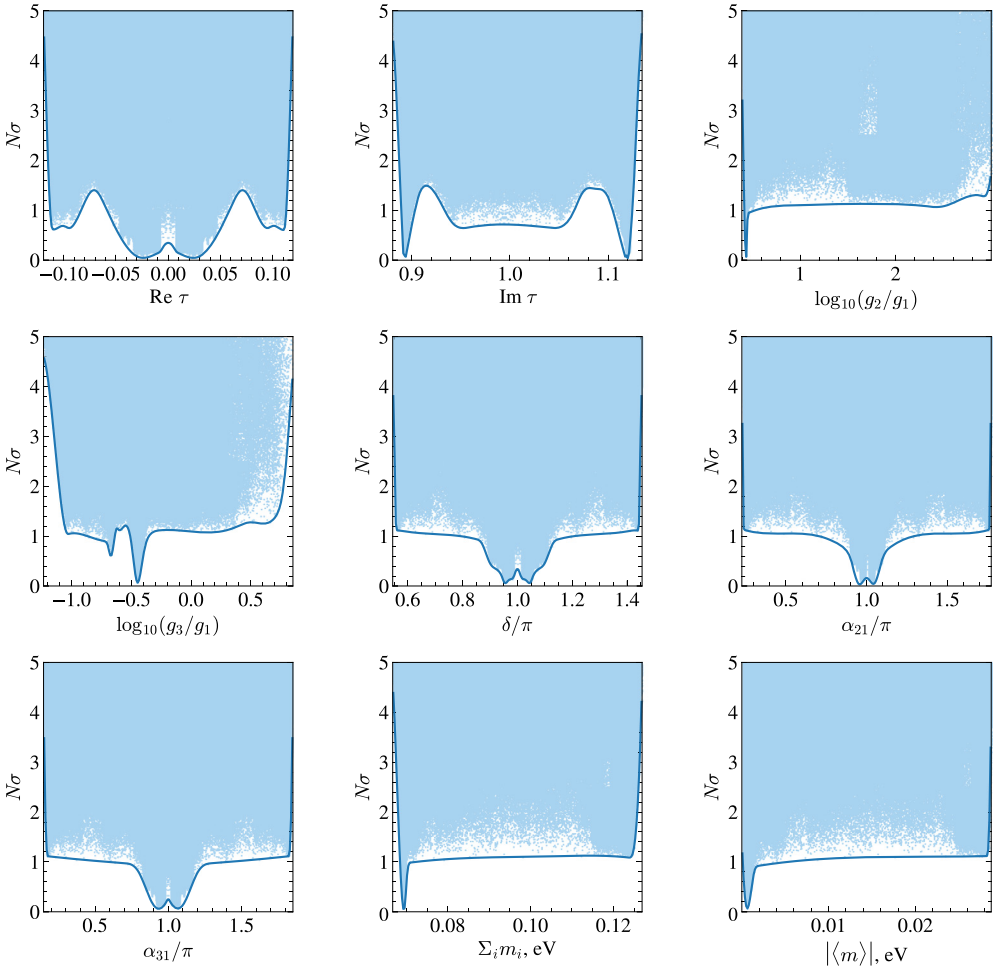


Fig. 7. Projections of $N\sigma = \sqrt{\Delta\chi^2}$ across observables and model parameters in the NO fit of the S'_4 Weinberg operator model of subsection 6.1. The lower boundary curves were obtained by fitting B-splines with generalised least squares [82].

fits a neutrino mass spectrum with NO at the $N\sigma \simeq 1.79$ level, with the following values for the observables:

$$\begin{aligned}
 m_e/m_\mu &\simeq 0.004807, & m_\mu/m_\tau &\simeq 0.06214, \\
 r &\simeq 0.02934, & \delta m^2 &\simeq 7.304 \cdot 10^{-5} \text{ eV}^2, & |\Delta m^2| &\simeq 2.489 \cdot 10^{-3} \text{ eV}^2, \\
 m_2 &\simeq 8.547 \cdot 10^{-3} \text{ eV}, & m_3 &\simeq 5.026 \cdot 10^{-2} \text{ eV}, & \Sigma_i m_i &\simeq 5.880 \cdot 10^{-2} \text{ eV}, \\
 \sin^2 \theta_{12} &\simeq 0.3140, & \sin^2 \theta_{13} &\simeq 0.02227, & \sin^2 \theta_{23} &\simeq 0.5619, \\
 \delta/\pi &\simeq 1.724, & \alpha_{32}/\pi &\simeq 0.8666, & |\langle m \rangle| &= 3.110 \cdot 10^{-3} \text{ eV},
 \end{aligned}
 \tag{6.15}$$

given the overall factors $v_u^2 g_1^2/\Lambda_1 \simeq 0.2347 \text{ eV}$ and $v_d \alpha_1 \simeq 1.778 \text{ GeV}$. Note that in this scenario m_1 vanishes at tree level, such that only the difference $\alpha_{32} \equiv \alpha_{31} - \alpha_{21}$ of Majorana phases is physical. The ratio of the masses M_i of the two heavy Majorana neutrinos is additionally predicted to be $M_2/M_1 \simeq 1.14$. A full numerical exploration of this scenario is postponed to future work.

7. Summary and conclusions

In the present article we have developed the formalism of the finite modular group Γ'_4 – the double cover group of Γ_4 – that can be used, in particular, for theories of lepton and quark flavour. The finite modular group Γ_4 , as is well known, is isomorphic to the permutation group S_4 , while Γ'_4 is isomorphic to the double cover of S_4 , S'_4 . In comparison with S_4 , the group S'_4 has twice as many elements and twice as many irreducible representations, i.e. it has 48 elements and admits 10 irreps: 4 one-dimensional, 2 two-dimensional, and 4 three-dimensional. We have denoted them by:

$$\mathbf{1}, \hat{\mathbf{1}}, \mathbf{1}', \hat{\mathbf{1}}', \mathbf{2}, \hat{\mathbf{2}}, \mathbf{3}, \hat{\mathbf{3}}, \mathbf{3}', \hat{\mathbf{3}}'.
 \tag{7.1}$$

Our notation has been chosen such that irreps without a hat have a direct correspondence with S_4 irreps, whereas hatted irreps are novel and specific to S'_4 . Working in a symmetric basis for the generators of S'_4 , we have derived the decompositions of tensor products of S'_4 irreps, as well as the corresponding Clebsch-Gordan coefficients (see Appendix C).

Modular forms of level 4 transforming non-trivially under S'_4 can have even integer or odd integer weight $k > 0$. In Section 3, we have explicitly constructed a basis for the 3-dimensional space of the modular forms of lowest weight $k = 1$, which furnishes a 3-dimensional representation $\hat{\mathbf{3}}$ of S'_4 , not present in S_4 . The three components of the weight 1 modular form $Y_3^{(1)}(\tau)$ transforming as a $\hat{\mathbf{3}}$ were shown to be quadratic polynomials of two “weight 1/2” Jacobi theta constants, denoted as $\varepsilon(\tau)$ and $\theta(\tau)$, τ being the modulus (cf. eq. (3.10)). The functions $\varepsilon(\tau)$ and $\theta(\tau)$ are related to the Dedekind eta function, and their q -expansions are given in eq. (3.3). We have further constructed S'_4 multiplets of modular forms of weights up to $k = 10$. The multiplets of weights $k \geq 2$ are expressed as homogeneous polynomials of even degree in the two functions ε and θ – see eqs. (3.12), (3.14) and (3.15), and Appendix D.

We have also investigated the problem of combining modular and generalised CP (gCP) invariance in theories based on S'_4 . We have shown, in particular, that in such theories the CP transformation can be defined in two possible ways, which we have denoted as CP_1 and CP_2 (see Section 4). They act in the same way on the (VEV of the) modulus τ , but the corresponding automorphisms act differently on the generators S and T of S'_4 . The CP_1 transformation coincides with the one that can be employed in $\Gamma_2 \simeq S_3$, $\Gamma_3 \simeq A_4$, $\Gamma_4 \simeq S_4$, and $\Gamma_5 \simeq A_5$ modular-invariant

theories [47]. The second transformation, CP_2 , may or may not differ from CP_1 in practice and is incompatible with certain combinations of modular weights and irreps. Note that CP_2 may also be consistently combined with other finite modular groups, such as $\Gamma_2 \simeq S_3$ and $\Gamma_4 \simeq S_4$.

We have analysed in detail, in Section 5, the possible residual symmetries in theories with modular invariance, and with modular and gCP invariance. Depending on the value of τ , some generators of the full symmetry group may be preserved. The possible residual symmetry groups can be non-trivial and are summarised in Table 2.

Finally, we have provided examples of application of our results in Section 6, constructing phenomenologically viable lepton flavour models based on the finite modular S'_4 symmetry in which neutrino masses are generated by the Weinberg operator and by the type I seesaw mechanism. Part of the novelty of these models lies in using (hatted) modular forms not present in the $\Gamma_4 \simeq S_4$ construction.

The approach developed by us in the present article simplifies considerably the parameterisation of modular forms of level 4 and given weight. In particular, the derivation of $k > 1$ modular multiplets in terms of just two independent functions ε and θ automatically bypasses a typical need to search for non-linear constraints, which would relate redundant multiplets coming from tensor products. This approach can be useful in other setups based on modular symmetry, for both homogeneous (double cover) and inhomogeneous finite modular groups.

CRediT authorship contribution statement

P.P. Novichkov: Conceptualization, Data curation, Formal analysis, Investigation, Methodology, Software, Validation, Visualization, Writing – original draft, Writing – review & editing. **J.T. Penedo:** Conceptualization, Data curation, Formal analysis, Investigation, Methodology, Software, Validation, Visualization, Writing – original draft, Writing – review & editing. **S.T. Petcov:** Conceptualization, Formal analysis, Investigation, Methodology, Supervision, Validation, Writing – original draft, Writing – review & editing.

Declaration of competing interest

The authors declare that they have no known competing financial interests or personal relationships that could have appeared to influence the work reported in this paper.

Acknowledgements

We would like to thank F. Capozzi, E. Di Valentino, E. Lisi, A. Marrone, A. Melchiorri and A. Palazzo for kindly sharing with us the data files for one-dimensional χ^2 projections. This project has received funding from the European Union's Horizon 2020 research and innovation programme under the Marie Skłodowska-Curie grant agreements No 674896 (ITN Elusives) and No 690575 (RISE InvisiblesPlus). This work was supported in part by the INFN program on Theoretical Astroparticle Physics (P.P.N. and S.T.P.) and by the World Premier International Research Center Initiative (WPI Initiative, MEXT), Japan (S.T.P.). The work of J.T.P. was supported by Fundação para a Ciência e a Tecnologia (FCT, Portugal) through the projects CFTP-FCT Unit 777 (UIDB/00777/2020 and UIDP/00777/2020) and PTDC/FIS-PAR/29436/2017 which are partially funded through POCTI (FEDER), COMPETE, QREN and EU.

Appendix A. Dedekind eta and Jacobi theta

The Dedekind eta function is a holomorphic function defined in the complex upper half-plane as

$$\eta(\tau) \equiv q^{\frac{1}{24}} \prod_{n=1}^{\infty} (1 - q^n), \tag{A.1}$$

where $q \equiv e^{2\pi i \tau}$ and $\text{Im } \tau > 0$. In this work, fractional powers $q^{1/n}$, n being a non-zero integer, should be read as $e^{2\pi i \tau/n}$.

The Jacobi theta functions $\Theta_i(z, \tau)$, $i = 1, \dots, 4$, (see e.g. [83]) are special functions of two complex variables. We are primarily interested in the so-called theta constants $\Theta_i(\tau) \equiv \Theta_i(0, \tau)$ which are functions of one complex variable defined in the upper half-plane by¹⁷

$$\begin{aligned} \Theta_2(\tau) &\equiv \sum_{k \in \mathbb{Z}} q^{\frac{1}{2}(k+\frac{1}{2})^2}, \\ \Theta_3(\tau) &\equiv \sum_{k \in \mathbb{Z}} q^{\frac{k^2}{2}}, \\ \Theta_4(\tau) &\equiv \sum_{k \in \mathbb{Z}} (-1)^k q^{\frac{k^2}{2}} \end{aligned} \tag{A.2}$$

(the first theta constant, $\Theta_1(\tau)$, is identically zero). The theta constants transform under the generators of the modular group as

$$\begin{aligned} \Theta_2(\tau) &\xrightarrow{T} e^{\frac{\pi i}{4}} \Theta_2(\tau), & \Theta_2(\tau) &\xrightarrow{S} \sqrt{-i\tau} \Theta_4(\tau), \\ \Theta_3(\tau) &\xrightarrow{T} \Theta_4(\tau), & \Theta_3(\tau) &\xrightarrow{S} \sqrt{-i\tau} \Theta_3(\tau), \\ \Theta_4(\tau) &\xrightarrow{T} \Theta_3(\tau), & \Theta_4(\tau) &\xrightarrow{S} \sqrt{-i\tau} \Theta_2(\tau). \end{aligned} \tag{A.3}$$

Note that in the S transformation the principal value of the square root is assumed.

Apart from the power series expansions (A.2), the theta constants admit the following infinite product representations:

$$\begin{aligned} \Theta_2(\tau) &= 2q^{\frac{1}{8}} \prod_{n=1}^{\infty} (1 - q^n) (1 + q^n)^2, \\ \Theta_3(\tau) &= \prod_{n=1}^{\infty} (1 - q^n) \left(1 + q^{n-\frac{1}{2}}\right)^2, \\ \Theta_4(\tau) &= \prod_{n=1}^{\infty} (1 - q^n) \left(1 - q^{n-\frac{1}{2}}\right)^2. \end{aligned} \tag{A.4}$$

By comparing the product expansions (A.4) with the definition of the Dedekind eta function (A.1), one can relate the theta constants to the Dedekind eta as

¹⁷ In the notation of Ref. [83] $q \equiv e^{\pi i \tau}$, which corresponds to $q^{1/2}$ in our notation.

$$\Theta_2(\tau) = \frac{2\eta^2(2\tau)}{\eta(\tau)}, \quad \Theta_3(\tau) = \frac{\eta^5(\tau)}{\eta^2\left(\frac{\tau}{2}\right)\eta^2(2\tau)}. \tag{A.5}$$

Finally, using the power series expansions (A.2) one can prove a useful identity:

$$\Theta_3(2\tau) = \frac{1}{2} \left[\Theta_3\left(\frac{\tau}{2}\right) + \Theta_4\left(\frac{\tau}{2}\right) \right]. \tag{A.6}$$

Appendix B. Modular forms of level 4 in terms of theta constants

The correspondence between modular forms of level 4 and the theta constants is well-known. The classical result is [84]

$$\mathcal{M}(\Gamma(4)) \simeq \mathbb{C} \left[\Theta_2^2(\tau), \Theta_3^2(\tau), \Theta_4^2(\tau) \right] / \left\{ \Theta_3^4(\tau) - \Theta_2^4(\tau) - \Theta_4^4(\tau) = 0 \right\}, \tag{B.1}$$

i.e. the ring of modular forms of level 4 is generated by the three squares of the theta constants subject to one non-linear relation

$$\Theta_3^4(\tau) - \Theta_2^4(\tau) - \Theta_4^4(\tau) = 0. \tag{B.2}$$

The idea we employ to avoid the non-linear relation (B.2) is to re-express $\Theta_7^2(\tau)$ in terms of $\Theta_j(2\tau)$ using bilinear identities on the theta functions [83]:

$$\begin{aligned} \Theta_2^2(\tau) &= 2 \Theta_2(2\tau) \Theta_3(2\tau), \\ \Theta_3^2(\tau) &= \Theta_3^2(2\tau) + \Theta_2^2(2\tau), \\ \Theta_4^2(\tau) &= \Theta_3^2(2\tau) - \Theta_2^2(2\tau). \end{aligned} \tag{B.3}$$

The relation (B.2) is automatically satisfied for the right-hand sides of eq. (B.3), therefore, comparing (B.3) with the original polynomial ring (B.1), we conclude that

$$\mathcal{M}(\Gamma(4)) \simeq \mathbb{C} \left[\Theta_2^2(2\tau), \Theta_3^2(2\tau), \Theta_2(2\tau) \Theta_3(2\tau) \right], \tag{B.4}$$

which means that modular forms of level 4 are homogeneous even-degree polynomials in $\Theta_2(2\tau)$ and $\Theta_3(2\tau)$.

Appendix C. Group theory of S'_4

C.1. Properties and irreducible representations

The homogeneous finite modular group $S'_4 \equiv SL(2, \mathbb{Z}_4)$ can be defined by three generators S , T and R satisfying the relations:

$$S^2 = R, \quad T^4 = (ST)^3 = R^2 = \mathbb{1}, \quad TR = RT. \tag{C.1}$$

It is a group of 48 elements (twice as many as S_4), with group ID [48, 30] in the computer algebra system GAP [76,77]. It admits 10 irreducible representations: 4 one-dimensional, 2 two-dimensional, and 4 three-dimensional, which we denote by

$$\mathbf{1}, \hat{\mathbf{1}}, \mathbf{1}', \hat{\mathbf{1}}', \mathbf{2}, \hat{\mathbf{2}}, \mathbf{3}, \hat{\mathbf{3}}, \mathbf{3}', \hat{\mathbf{3}}'. \tag{C.2}$$

The notation has been chosen such that irreps without a hat have a direct correspondence with S_4 irreps, whereas hatted irreps are novel and specific to S'_4 . In fact, for the hatless irreps, the

Table 6

Character table for S'_4 , obtained via the GAP `IRR()` function. nC_k denotes a conjugacy class of n elements of order k .

	Rep. element(s)	1	$\hat{1}$	$1'$	$\hat{1}'$	2	$\hat{2}$	3	$\hat{3}$	$3'$	$\hat{3}'$
$1C_1$	1	1	1	1	1	2	2	3	3	3	3
$1C_2$	R	1	-1	1	-1	2	-2	3	-3	3	-3
$3C_2$	T^2	1	-1	1	-1	2	-2	-1	1	-1	1
$3\hat{C}_2$	RT^2	1	1	1	1	2	2	-1	-1	-1	-1
$6C_4$	S	1	i	-1	$-i$	0	0	1	i	-1	$-i$
$6\hat{C}_4$	$RS = S^{-1}$	1	$-i$	-1	i	0	0	1	$-i$	-1	i
$6C'_4$	T	1	$-i$	-1	i	0	0	-1	i	1	$-i$
$6\hat{C}'_4$	RT, T^{-1}	1	i	-1	$-i$	0	0	-1	$-i$	1	i
$8C_3$	ST	1	1	1	1	-1	-1	0	0	0	0
$8C_6$	RST	1	-1	1	-1	-1	1	0	0	0	0

Table 7

Representation matrices for the group generators in different S'_4 irreps \mathbf{r} .

\mathbf{r}	$\rho_{\mathbf{r}}(S)$	$\rho_{\mathbf{r}}(T)$	$\rho_{\mathbf{r}}(R)$
1	1	1	1
$\hat{1}$	i	$-i$	-1
$1'$	-1	-1	1
$\hat{1}'$	$-i$	i	-1
2	$\frac{1}{2} \begin{pmatrix} -1 & \sqrt{3} \\ \sqrt{3} & 1 \end{pmatrix}$	$\begin{pmatrix} 1 & 0 \\ 0 & -1 \end{pmatrix}$	$\begin{pmatrix} 1 & 0 \\ 0 & 1 \end{pmatrix}$
$\hat{2}$	$\frac{i}{2} \begin{pmatrix} -1 & \sqrt{3} \\ \sqrt{3} & 1 \end{pmatrix}$	$\begin{pmatrix} -i & 0 \\ 0 & i \end{pmatrix}$	$-\begin{pmatrix} 1 & 0 \\ 0 & 1 \end{pmatrix}$
3	$-\frac{1}{2} \begin{pmatrix} 0 & \sqrt{2} & \sqrt{2} \\ \sqrt{2} & -1 & 1 \\ \sqrt{2} & 1 & -1 \end{pmatrix}$	$\begin{pmatrix} -1 & 0 & 0 \\ 0 & -i & 0 \\ 0 & 0 & i \end{pmatrix}$	$\begin{pmatrix} 1 & 0 & 0 \\ 0 & 1 & 0 \\ 0 & 0 & 1 \end{pmatrix}$
$\hat{3}$	$-\frac{i}{2} \begin{pmatrix} 0 & \sqrt{2} & \sqrt{2} \\ \sqrt{2} & -1 & 1 \\ \sqrt{2} & 1 & -1 \end{pmatrix}$	$\begin{pmatrix} i & 0 & 0 \\ 0 & -1 & 0 \\ 0 & 0 & 1 \end{pmatrix}$	$-\begin{pmatrix} 1 & 0 & 0 \\ 0 & 1 & 0 \\ 0 & 0 & 1 \end{pmatrix}$
$3'$	$\frac{1}{2} \begin{pmatrix} 0 & \sqrt{2} & \sqrt{2} \\ \sqrt{2} & -1 & 1 \\ \sqrt{2} & 1 & -1 \end{pmatrix}$	$\begin{pmatrix} 1 & 0 & 0 \\ 0 & i & 0 \\ 0 & 0 & -i \end{pmatrix}$	$\begin{pmatrix} 1 & 0 & 0 \\ 0 & 1 & 0 \\ 0 & 0 & 1 \end{pmatrix}$
$\hat{3}'$	$\frac{i}{2} \begin{pmatrix} 0 & \sqrt{2} & \sqrt{2} \\ \sqrt{2} & -1 & 1 \\ \sqrt{2} & 1 & -1 \end{pmatrix}$	$\begin{pmatrix} -i & 0 & 0 \\ 0 & 1 & 0 \\ 0 & 0 & -1 \end{pmatrix}$	$-\begin{pmatrix} 1 & 0 & 0 \\ 0 & 1 & 0 \\ 0 & 0 & 1 \end{pmatrix}$

new generator R is represented by the identity matrix and the construction effectively reduces to that of $S_4 \simeq S'_4 / \{R = 1\}$. We also note that the hatless irreps are real, while the hatted irreps are complex except for $\hat{2}$ which is pseudoreal.

The 48 elements of S'_4 are organised into 10 conjugacy classes. The character table is given in Table 6 and shows at least one representative element for each class.

C.2. Representation basis

In Table 7, we summarise the working basis for the representation matrices of the group generators S , T and R . In this basis, the group generators are represented by symmetric matrices,

Table 8
Decomposition of all non-trivial tensor products involving 1-dimensional S'_4 irreps, and corresponding Clebsch-Gordan coefficients.

Tensor product decomposition	Clebsch-Gordan coefficients
$\mathbf{1}' \otimes \mathbf{1}' = \mathbf{1}$	
$\mathbf{1}' \otimes \hat{\mathbf{1}} = \hat{\mathbf{1}}'$	
$\mathbf{1}' \otimes \hat{\mathbf{1}}' = \hat{\mathbf{1}}$	
$\hat{\mathbf{1}} \otimes \hat{\mathbf{1}} = \mathbf{1}'$	$\alpha_1 \beta_1$
$\hat{\mathbf{1}} \otimes \hat{\mathbf{1}}' = \mathbf{1}$	
$\hat{\mathbf{1}}' \otimes \hat{\mathbf{1}}' = \mathbf{1}'$	
$\mathbf{1}' \otimes \mathbf{2} = \mathbf{2}$	
$\hat{\mathbf{1}}' \otimes \mathbf{2} = \hat{\mathbf{2}}$	
$\mathbf{1}' \otimes \hat{\mathbf{2}} = \hat{\mathbf{2}}$	$\alpha_1 \begin{pmatrix} \beta_2 \\ -\beta_1 \end{pmatrix}$
$\hat{\mathbf{1}} \otimes \hat{\mathbf{2}} = \mathbf{2}$	
$\hat{\mathbf{1}} \otimes \mathbf{2} = \hat{\mathbf{2}}$	$\alpha_1 \begin{pmatrix} \beta_1 \\ \beta_2 \end{pmatrix}$
$\hat{\mathbf{1}}' \otimes \hat{\mathbf{2}} = \mathbf{2}$	
$\mathbf{1}' \otimes \mathbf{3} = \mathbf{3}'$	
$\hat{\mathbf{1}} \otimes \mathbf{3} = \hat{\mathbf{3}}$	
$\hat{\mathbf{1}}' \otimes \mathbf{3} = \hat{\mathbf{3}}'$	
$\mathbf{1}' \otimes \mathbf{3}' = \mathbf{3}$	
$\hat{\mathbf{1}} \otimes \mathbf{3}' = \hat{\mathbf{3}}'$	
$\hat{\mathbf{1}}' \otimes \mathbf{3}' = \hat{\mathbf{3}}$	
$\mathbf{1}' \otimes \hat{\mathbf{3}} = \hat{\mathbf{3}}'$	$\alpha_1 \begin{pmatrix} \beta_1 \\ \beta_2 \\ \beta_3 \end{pmatrix}$
$\hat{\mathbf{1}} \otimes \hat{\mathbf{3}} = \mathbf{3}'$	
$\hat{\mathbf{1}}' \otimes \hat{\mathbf{3}} = \mathbf{3}$	
$\mathbf{1}' \otimes \hat{\mathbf{3}}' = \hat{\mathbf{3}}$	
$\hat{\mathbf{1}} \otimes \hat{\mathbf{3}}' = \mathbf{3}$	
$\hat{\mathbf{1}}' \otimes \hat{\mathbf{3}}' = \mathbf{3}'$	

$\rho_{\mathbf{r}}(S, T, R) = \rho_{\mathbf{r}}(S, T, R)^T$, for all irreps \mathbf{r} of S'_4 . Such a basis is convenient for the study of modular symmetry extended by a gCP symmetry (see Section 4 and Ref. [47]).

C.3. Tensor products and Clebsch-Gordan coefficients

We present here the decompositions of tensor products of S'_4 irreps, as well as the corresponding Clebsch-Gordan coefficients, given in the basis of Table 7. Entries of each multiplet entering the tensor product are denoted by α_i and β_i . Apart from the trivial products $\mathbf{1} \otimes \mathbf{r} = \mathbf{r}$, these results are collected in Tables 8–11.

Appendix D. Higher weight modular multiplets for S'_4

Modular multiplets for the homogeneous finite modular group S'_4 can be written in terms of the functions $\theta(\tau)$ and $\varepsilon(\tau)$ of eqs. (3.2) and (3.3). For weights $k = 1, \dots, 4$, they are given in eqs. (3.10), (3.12), (3.14), and (3.15), respectively. In the present Appendix we collect higher weight multiplets, up to $k = 10$. All multiplets contained in this paper have been obtained from the $k = 1$ triplet of eq. (3.10) using the Clebsch-Gordan coefficients of Appendix C.3 and respecting the corresponding normalisations, up to a sign. For $k = 5$, one has:

Table 9

Decomposition of tensor products involving two 2-dimensional S'_4 irreps, and corresponding Clebsch-Gordan coefficients. Note that the order is important in order to match the left and right columns.

Tensor product decomposition	Clebsch-Gordan coefficients
$2 \otimes 2 = 1 \oplus 1' \oplus 2$	$\frac{1}{\sqrt{2}} (\alpha_1 \beta_1 + \alpha_2 \beta_2)$
$2 \otimes \hat{2} = \hat{1} \oplus \hat{1}' \oplus \hat{2}$	$\oplus \frac{1}{\sqrt{2}} (\alpha_1 \beta_2 - \alpha_2 \beta_1)$
	$\oplus \frac{1}{\sqrt{2}} (\alpha_2 \beta_2 - \alpha_1 \beta_1)$
	$\frac{1}{\sqrt{2}} (\alpha_1 \beta_2 - \alpha_2 \beta_1)$
$\hat{2} \otimes \hat{2} = 1 \oplus 1' \oplus 2$	$\oplus \frac{1}{\sqrt{2}} (\alpha_1 \beta_1 + \alpha_2 \beta_2)$
	$\oplus \frac{1}{\sqrt{2}} (\alpha_1 \beta_2 + \alpha_2 \beta_1)$
	$\oplus \frac{1}{\sqrt{2}} (\alpha_1 \beta_1 - \alpha_2 \beta_2)$

Table 10

The same as in Table 9, but for products involving a 2-dimensional and a 3-dimensional irrep.

Tensor product decomposition	Clebsch-Gordan coefficients
$2 \otimes 3 = 3 \oplus 3'$	$\begin{pmatrix} \alpha_1 \beta_1 \\ (\sqrt{3}/2) \alpha_2 \beta_3 - (1/2) \alpha_1 \beta_2 \end{pmatrix}$
$2 \otimes \hat{3} = \hat{3} \oplus \hat{3}'$	$\begin{pmatrix} (\sqrt{3}/2) \alpha_2 \beta_2 - (1/2) \alpha_1 \beta_3 \end{pmatrix}$
$\hat{2} \otimes 3 = \hat{3} \oplus \hat{3}'$	$\begin{pmatrix} -\alpha_2 \beta_1 \\ (\sqrt{3}/2) \alpha_1 \beta_3 + (1/2) \alpha_2 \beta_2 \end{pmatrix}$
$\hat{2} \otimes 3' = 3 \oplus 3'$	$\oplus \begin{pmatrix} (\sqrt{3}/2) \alpha_1 \beta_2 + (1/2) \alpha_2 \beta_3 \end{pmatrix}$
$2 \otimes 3' = 3 \oplus 3'$	$\begin{pmatrix} -\alpha_2 \beta_1 \\ (\sqrt{3}/2) \alpha_1 \beta_3 + (1/2) \alpha_2 \beta_2 \end{pmatrix}$
$2 \otimes \hat{3}' = \hat{3} \oplus \hat{3}'$	$\begin{pmatrix} (\sqrt{3}/2) \alpha_1 \beta_2 + (1/2) \alpha_2 \beta_3 \end{pmatrix}$
$\hat{2} \otimes 3' = \hat{3} \oplus \hat{3}'$	$\begin{pmatrix} \alpha_1 \beta_1 \\ (\sqrt{3}/2) \alpha_2 \beta_3 - (1/2) \alpha_1 \beta_2 \end{pmatrix}$
$\hat{2} \otimes \hat{3} = 3 \oplus 3'$	$\oplus \begin{pmatrix} (\sqrt{3}/2) \alpha_2 \beta_2 - (1/2) \alpha_1 \beta_3 \end{pmatrix}$

$$Y_{\hat{2}}^{(5)}(\tau) = \begin{pmatrix} \frac{3}{2} (\varepsilon^3 \theta^7 - \varepsilon^7 \theta^3) \\ \frac{\sqrt{3}}{4} (\varepsilon \theta^9 - \varepsilon^9 \theta) \end{pmatrix},$$

$$Y_{\hat{3},1}^{(5)}(\tau) = \begin{pmatrix} \frac{6\sqrt{2}}{\sqrt{5}} \varepsilon^5 \theta^5 \\ \frac{3}{8\sqrt{5}} (5 \varepsilon^2 \theta^8 + 10 \varepsilon^6 \theta^4 + \varepsilon^{10}) \\ -\frac{3}{8\sqrt{5}} (\theta^{10} + 10 \varepsilon^4 \theta^6 + 5 \varepsilon^8 \theta^2) \end{pmatrix},$$

Table 11
The same as in Table 9, but for products involving two 3-dimensional irreps.

Tensor product decomposition	Clebsch-Gordan coefficients
$3 \otimes 3 = 1 \oplus 2 \oplus 3 \oplus 3'$	$\frac{1}{\sqrt{3}} (\alpha_1 \beta_1 + \alpha_2 \beta_3 + \alpha_3 \beta_2)$
$3 \otimes \hat{3} = \hat{1} \oplus \hat{2} \oplus \hat{3} \oplus \hat{3}'$	$\oplus \frac{1}{\sqrt{2}} \left(\frac{(2\alpha_1 \beta_1 - \alpha_2 \beta_3 - \alpha_3 \beta_2) / \sqrt{3}}{\alpha_2 \beta_2 + \alpha_3 \beta_3} \right)$
$3' \otimes 3' = 1 \oplus 2 \oplus 3 \oplus 3'$	$\oplus \frac{1}{\sqrt{2}} \left(\frac{\alpha_3 \beta_3 - \alpha_2 \beta_2}{\alpha_1 \beta_3 + \alpha_3 \beta_1} \right)$
$3' \otimes \hat{3}' = \hat{1} \oplus \hat{2} \oplus \hat{3} \oplus \hat{3}'$	$\oplus \frac{1}{\sqrt{2}} \left(\frac{-\alpha_1 \beta_2 - \alpha_2 \beta_1}{\alpha_3 \beta_3 - \alpha_2 \beta_2} \right)$
$\hat{3} \otimes \hat{3}' = 1 \oplus 2 \oplus 3 \oplus 3'$	$\oplus \frac{1}{\sqrt{2}} \left(\frac{\alpha_3 \beta_2 - \alpha_2 \beta_3}{\alpha_2 \beta_1 - \alpha_1 \beta_2} \right)$ $\oplus \frac{1}{\sqrt{2}} \left(\frac{\alpha_1 \beta_3 - \alpha_3 \beta_1}{\alpha_1 \beta_3 - \alpha_3 \beta_1} \right)$
$3 \otimes 3' = 1' \oplus 2 \oplus 3 \oplus 3'$	$\frac{1}{\sqrt{3}} (\alpha_1 \beta_1 + \alpha_2 \beta_3 + \alpha_3 \beta_2)$
$3 \otimes \hat{3}' = \hat{1}' \oplus \hat{2} \oplus \hat{3} \oplus \hat{3}'$	$\oplus \frac{1}{\sqrt{2}} \left(\frac{\alpha_2 \beta_2 + \alpha_3 \beta_3}{(-2\alpha_1 \beta_1 + \alpha_2 \beta_3 + \alpha_3 \beta_2) / \sqrt{3}} \right)$
$3' \otimes \hat{3} = \hat{1}' \oplus \hat{2} \oplus \hat{3} \oplus \hat{3}'$	$\oplus \frac{1}{\sqrt{2}} \left(\frac{\alpha_3 \beta_2 - \alpha_2 \beta_3}{\alpha_2 \beta_1 - \alpha_1 \beta_2} \right)$
$\hat{3} \otimes \hat{3} = 1' \oplus 2 \oplus 3 \oplus 3'$	$\oplus \frac{1}{\sqrt{2}} \left(\frac{\alpha_1 \beta_3 - \alpha_3 \beta_1}{\alpha_1 \beta_3 - \alpha_3 \beta_1} \right)$
$\hat{3}' \otimes \hat{3}' = 1' \oplus 2 \oplus 3 \oplus 3'$	$\oplus \frac{1}{\sqrt{2}} \left(\frac{\alpha_3 \beta_3 - \alpha_2 \beta_2}{\alpha_1 \beta_3 + \alpha_3 \beta_1} \right)$ $\oplus \frac{1}{\sqrt{2}} \left(\frac{-\alpha_1 \beta_2 - \alpha_2 \beta_1}{\alpha_1 \beta_3 + \alpha_3 \beta_1} \right)$

$$Y_{\hat{3},2}^{(5)}(\tau) = \begin{pmatrix} \frac{3}{4} (\varepsilon \theta^9 - 2 \varepsilon^5 \theta^5 + \varepsilon^9 \theta) \\ \frac{3}{\sqrt{2}} (-\varepsilon^2 \theta^8 + \varepsilon^6 \theta^4) \\ \frac{3}{\sqrt{2}} (-\varepsilon^4 \theta^6 + \varepsilon^8 \theta^2) \end{pmatrix},$$

$$Y_{\hat{3}'}^{(5)}(\tau) = \begin{pmatrix} 2 (\varepsilon^3 \theta^7 + \varepsilon^7 \theta^3) \\ \frac{1}{4\sqrt{2}} (\theta^{10} - 14 \varepsilon^4 \theta^6 - 3 \varepsilon^8 \theta^2) \\ \frac{1}{4\sqrt{2}} (3 \varepsilon^2 \theta^8 + 14 \varepsilon^6 \theta^4 - \varepsilon^{10}) \end{pmatrix}.$$

For $k = 6$, one has:

$$Y_1^{(6)}(\tau) = \frac{1}{4\sqrt{6}} (\theta^{12} - 33 \varepsilon^4 \theta^8 - 33 \varepsilon^8 \theta^4 + \varepsilon^{12}),$$

$$Y_{1'}^{(6)}(\tau) = \frac{3}{2} \sqrt{\frac{3}{2}} (\varepsilon^2 \theta^{10} - 2 \varepsilon^6 \theta^6 + \varepsilon^{10} \theta^2),$$

$$Y_2^{(6)}(\tau) = \begin{pmatrix} \frac{1}{8} (\theta^{12} + 15 \varepsilon^4 \theta^8 + 15 \varepsilon^8 \theta^4 + \varepsilon^{12}) \\ -\frac{\sqrt{3}}{4} (\varepsilon^2 \theta^{10} + 14 \varepsilon^6 \theta^6 + \varepsilon^{10} \theta^2) \end{pmatrix},$$

$$Y_3^{(6)}(\tau) = \begin{pmatrix} \frac{3}{2} (\varepsilon^2 \theta^{10} - \varepsilon^{10} \theta^2) \\ \frac{3}{4\sqrt{2}} (5 \varepsilon^3 \theta^9 - 6 \varepsilon^7 \theta^5 + \varepsilon^{11} \theta) \\ \frac{3}{4\sqrt{2}} (\varepsilon \theta^{11} - 6 \varepsilon^5 \theta^7 + 5 \varepsilon^9 \theta^3) \end{pmatrix},$$

$$Y_{\hat{3},1}^{(6)}(\tau) = \begin{pmatrix} -\frac{3}{8\sqrt{13}} (\theta^{12} - 3\varepsilon^4\theta^8 + 3\varepsilon^8\theta^4 - \varepsilon^{12}) \\ \frac{3\sqrt{2}}{\sqrt{13}} (3\varepsilon^5\theta^7 + \varepsilon^9\theta^3) \\ \frac{3\sqrt{2}}{\sqrt{13}} (\varepsilon^3\theta^9 + 3\varepsilon^7\theta^5) \end{pmatrix},$$

$$Y_{\hat{3},2}^{(6)}(\tau) = \begin{pmatrix} 3(\varepsilon^4\theta^8 - \varepsilon^8\theta^4) \\ -\frac{3}{4\sqrt{2}} (\varepsilon\theta^{11} + 2\varepsilon^5\theta^7 - 3\varepsilon^9\theta^3) \\ \frac{3}{4\sqrt{2}} (3\varepsilon^3\theta^9 - 2\varepsilon^7\theta^5 - \varepsilon^{11}\theta) \end{pmatrix}.$$

For $k = 7$, one has:

$$Y_{\hat{1}'}^{(7)}(\tau) = \frac{1}{4}\sqrt{\frac{3}{2}} \left(-\varepsilon^{13}\theta - 13\varepsilon^9\theta^5 + 13\varepsilon^5\theta^9 + \varepsilon\theta^{13} \right),$$

$$Y_{\hat{2}}^{(7)}(\tau) = \begin{pmatrix} \frac{3}{2} (\varepsilon^3\theta^{11} - \varepsilon^{11}\theta^3) \\ -\frac{\sqrt{3}}{8} (\varepsilon\theta^{13} - 11\varepsilon^5\theta^9 + 11\varepsilon^9\theta^5 - \varepsilon^{13}\theta) \end{pmatrix},$$

$$Y_{\hat{3},1}^{(7)}(\tau) = \begin{pmatrix} \frac{12}{\sqrt{13}} (\varepsilon^5\theta^9 + \varepsilon^9\theta^5) \\ \frac{3}{8\sqrt{26}} (\varepsilon^2\theta^{12} + 45\varepsilon^6\theta^8 + 19\varepsilon^{10}\theta^4 - \varepsilon^{14}) \\ \frac{3}{8\sqrt{26}} (\theta^{14} - 19\varepsilon^4\theta^{10} - 45\varepsilon^8\theta^6 - \varepsilon^{12}\theta^2) \end{pmatrix},$$

$$Y_{\hat{3},2}^{(7)}(\tau) = \begin{pmatrix} \frac{3}{8} (\varepsilon\theta^{13} - \varepsilon^5\theta^9 - \varepsilon^9\theta^5 + \varepsilon^{13}\theta) \\ \frac{3}{4\sqrt{2}} (\varepsilon^2\theta^{12} + 6\varepsilon^6\theta^8 - 7\varepsilon^{10}\theta^4) \\ \frac{3}{4\sqrt{2}} (7\varepsilon^4\theta^{10} - 6\varepsilon^8\theta^6 - \varepsilon^{12}\theta^2) \end{pmatrix},$$

$$Y_{\hat{3},1}^{(7)}(\tau) = \begin{pmatrix} \frac{3}{4\sqrt{37}} (7\varepsilon^3\theta^{11} + 50\varepsilon^7\theta^7 + 7\varepsilon^{11}\theta^3) \\ -\frac{3}{4\sqrt{74}} (\theta^{14} + 14\varepsilon^4\theta^{10} + 49\varepsilon^8\theta^6) \\ \frac{3}{4\sqrt{74}} (49\varepsilon^6\theta^8 + 14\varepsilon^{10}\theta^4 + \varepsilon^{14}) \end{pmatrix},$$

$$Y_{\hat{3},2}^{(7)}(\tau) = \begin{pmatrix} \frac{9}{4} (\varepsilon^3\theta^{11} - 2\varepsilon^7\theta^7 + \varepsilon^{11}\theta^3) \\ \frac{9}{4\sqrt{2}} (\varepsilon^4\theta^{10} - 2\varepsilon^8\theta^6 + \varepsilon^{12}\theta^2) \\ -\frac{9}{4\sqrt{2}} (\varepsilon^2\theta^{12} - 2\varepsilon^6\theta^8 + \varepsilon^{10}\theta^4) \end{pmatrix}.$$

For $k = 8$, one has:

$$Y_{\hat{1}}^{(8)}(\tau) = \frac{1}{8\sqrt{6}} \left(\theta^{16} + 28\varepsilon^4\theta^{12} + 198\varepsilon^8\theta^8 + 28\varepsilon^{12}\theta^4 + \varepsilon^{16} \right),$$

$$Y_{\hat{2},1}^{(8)}(\tau) = \begin{pmatrix} \frac{9}{16\sqrt{82}} (\theta^{16} - 130\varepsilon^8\theta^8 + \varepsilon^{16}) \\ \frac{3}{8}\sqrt{\frac{3}{82}} (5\varepsilon^2\theta^{14} + 91\varepsilon^6\theta^{10} + 91\varepsilon^{10}\theta^6 + 5\varepsilon^{14}\theta^2) \end{pmatrix},$$

$$\begin{aligned}
 Y_{2,2}^{(8)}(\tau) &= \begin{pmatrix} \frac{9}{4} (\varepsilon^4 \theta^{12} - 2\varepsilon^8 \theta^8 + \varepsilon^{12} \theta^4) \\ \frac{3\sqrt{3}}{8} (\varepsilon^2 \theta^{14} - \varepsilon^6 \theta^{10} - \varepsilon^{10} \theta^6 + \varepsilon^{14} \theta^2) \end{pmatrix}, \\
 Y_{3,1}^{(8)}(\tau) &= \begin{pmatrix} 9\sqrt{\frac{2}{5}} (\varepsilon^6 \theta^{10} - \varepsilon^{10} \theta^6) \\ \frac{9}{16\sqrt{5}} (5\varepsilon^3 \theta^{13} + 5\varepsilon^7 \theta^9 - 9\varepsilon^{11} \theta^5 - \varepsilon^{15} \theta) \\ -\frac{9}{16\sqrt{5}} (\varepsilon \theta^{15} + 9\varepsilon^5 \theta^{11} - 5\varepsilon^9 \theta^7 - 5\varepsilon^{13} \theta^3) \end{pmatrix}, \\
 Y_{3,2}^{(8)}(\tau) &= \begin{pmatrix} -\frac{9}{8} (\varepsilon^2 \theta^{14} - 3\varepsilon^6 \theta^{10} + 3\varepsilon^{10} \theta^6 - \varepsilon^{14} \theta^2) \\ \frac{9}{2\sqrt{2}} (\varepsilon^3 \theta^{13} - 2\varepsilon^7 \theta^9 + \varepsilon^{11} \theta^5) \\ \frac{9}{2\sqrt{2}} (\varepsilon^5 \theta^{11} - 2\varepsilon^9 \theta^7 + \varepsilon^{13} \theta^3) \end{pmatrix}, \\
 Y_{3',1}^{(8)}(\tau) &= \begin{pmatrix} \frac{3}{50} (\theta^{16} - \varepsilon^{16}) \\ \frac{3}{200\sqrt{2}} (\varepsilon \theta^{15} + 273\varepsilon^5 \theta^{11} + 715\varepsilon^9 \theta^7 + 35\varepsilon^{13} \theta^3) \\ \frac{3}{200\sqrt{2}} (35\varepsilon^3 \theta^{13} + 715\varepsilon^7 \theta^9 + 273\varepsilon^{11} \theta^5 + \varepsilon^{15} \theta) \end{pmatrix}, \\
 Y_{3',2}^{(8)}(\tau) &= \begin{pmatrix} 3(\varepsilon^4 \theta^{12} - \varepsilon^{12} \theta^4) \\ \frac{3}{8\sqrt{2}} (\varepsilon \theta^{15} - 15\varepsilon^5 \theta^{11} + 11\varepsilon^9 \theta^7 + 3\varepsilon^{13} \theta^3) \\ \frac{3}{8\sqrt{2}} (3\varepsilon^3 \theta^{13} + 11\varepsilon^7 \theta^9 - 15\varepsilon^{11} \theta^5 + \varepsilon^{15} \theta) \end{pmatrix}.
 \end{aligned}$$

For $k = 9$, one has:

$$\begin{aligned}
 Y_{\hat{1}}^{(9)}(\tau) &= \frac{9}{4} \sqrt{\frac{3}{2}} (\varepsilon^3 \theta^{15} - 3\varepsilon^7 \theta^{11} + 3\varepsilon^{11} \theta^7 - \varepsilon^{15} \theta^3), \\
 Y_{\hat{1}'}^{(9)}(\tau) &= \frac{1}{8} \sqrt{\frac{3}{2}} (\varepsilon \theta^{17} - 34\varepsilon^5 \theta^{13} + 34\varepsilon^{13} \theta^5 - \varepsilon^{17} \theta), \\
 Y_{\hat{2}}^{(9)}(\tau) &= \begin{pmatrix} \frac{3}{8} (\varepsilon^3 \theta^{15} + 13\varepsilon^7 \theta^{11} - 13\varepsilon^{11} \theta^7 - \varepsilon^{15} \theta^3) \\ \frac{\sqrt{3}}{16} (\varepsilon \theta^{17} + 14\varepsilon^5 \theta^{13} - 14\varepsilon^{13} \theta^5 - \varepsilon^{17} \theta) \end{pmatrix}, \\
 Y_{\hat{3},1}^{(9)}(\tau) &= \begin{pmatrix} \frac{1}{2\sqrt{19}} (\varepsilon \theta^{17} - 17\varepsilon^5 \theta^{13} - 17\varepsilon^{13} \theta^5 + \varepsilon^{17} \theta) \\ \frac{1}{16\sqrt{38}} (17\varepsilon^2 \theta^{16} - 442\varepsilon^6 \theta^{12} + 170\varepsilon^{14} \theta^4 - \varepsilon^{18}) \\ \frac{1}{16\sqrt{38}} (\theta^{18} - 170\varepsilon^4 \theta^{14} + 442\varepsilon^{12} \theta^6 - 17\varepsilon^{16} \theta^2) \end{pmatrix}, \\
 Y_{\hat{3},2}^{(9)}(\tau) &= \begin{pmatrix} -\frac{3}{8\sqrt{5}} (\varepsilon \theta^{17} - 2\varepsilon^9 \theta^9 + \varepsilon^{17} \theta) \\ \frac{3}{8\sqrt{10}} (\varepsilon^2 \theta^{16} + 49\varepsilon^6 \theta^{12} - 37\varepsilon^{10} \theta^8 - 13\varepsilon^{14} \theta^4) \\ \frac{3}{8\sqrt{10}} (13\varepsilon^4 \theta^{14} + 37\varepsilon^8 \theta^{10} - 49\varepsilon^{12} \theta^6 - \varepsilon^{16} \theta^2) \end{pmatrix},
 \end{aligned}$$

$$Y_{\hat{3},3}^{(9)}(\tau) = \left(\begin{array}{c} \frac{9}{2} (\varepsilon^5 \theta^{13} - 2 \varepsilon^9 \theta^9 + \varepsilon^{13} \theta^5) \\ -\frac{9}{8\sqrt{2}} (\varepsilon^2 \theta^{16} + \varepsilon^6 \theta^{12} - 5 \varepsilon^{10} \theta^8 + 3 \varepsilon^{14} \theta^4) \\ \frac{9}{8\sqrt{2}} (3 \varepsilon^4 \theta^{14} - 5 \varepsilon^8 \theta^{10} + \varepsilon^{12} \theta^6 + \varepsilon^{16} \theta^2) \end{array} \right),$$

$$Y_{\hat{3},1}^{(9)}(\tau) = \left(\begin{array}{c} \frac{1}{4\sqrt{10}} (7 \varepsilon^3 \theta^{15} - 39 \varepsilon^7 \theta^{11} - 39 \varepsilon^{11} \theta^7 + 7 \varepsilon^{15} \theta^3) \\ -\frac{1}{32\sqrt{5}} (\theta^{18} - 90 \varepsilon^4 \theta^{14} - 182 \varepsilon^{12} \theta^6 + 15 \varepsilon^{16} \theta^2) \\ \frac{1}{32\sqrt{5}} (15 \varepsilon^2 \theta^{16} - 182 \varepsilon^6 \theta^{12} - 90 \varepsilon^{14} \theta^4 + \varepsilon^{18}) \end{array} \right),$$

$$Y_{\hat{3},2}^{(9)}(\tau) = \left(\begin{array}{c} \frac{3}{4} (\varepsilon^3 \theta^{15} - \varepsilon^7 \theta^{11} - \varepsilon^{11} \theta^7 + \varepsilon^{15} \theta^3) \\ \frac{3}{8\sqrt{2}} (5 \varepsilon^4 \theta^{14} - 11 \varepsilon^8 \theta^{10} + 7 \varepsilon^{12} \theta^6 - \varepsilon^{16} \theta^2) \\ \frac{3}{8\sqrt{2}} (\varepsilon^2 \theta^{16} - 7 \varepsilon^6 \theta^{12} + 11 \varepsilon^{10} \theta^8 - 5 \varepsilon^{14} \theta^4) \end{array} \right).$$

Finally, for $k = 10$ one has:

$$Y_1^{(10)}(\tau) = \frac{1}{16\sqrt{6}} (\theta^{20} - 19 \varepsilon^4 \theta^{16} - 494 \varepsilon^8 \theta^{12} - 494 \varepsilon^{12} \theta^8 - 19 \varepsilon^{16} \theta^4 + \varepsilon^{20}),$$

$$Y_{1'}^{(10)}(\tau) = \frac{3}{8} \sqrt{\frac{3}{2}} (\varepsilon^2 \theta^{18} + 12 \varepsilon^6 \theta^{14} - 26 \varepsilon^{10} \theta^{10} + 12 \varepsilon^{14} \theta^6 + \varepsilon^{18} \theta^2),$$

$$Y_{2,1}^{(10)}(\tau) = \left(\begin{array}{c} \frac{3}{32\sqrt{10}} (\theta^{20} + 5 \varepsilon^4 \theta^{16} + 250 \varepsilon^8 \theta^{12} + 250 \varepsilon^{12} \theta^8 + 5 \varepsilon^{16} \theta^4 + \varepsilon^{20}) \\ -\frac{3}{2} \sqrt{\frac{3}{10}} (5 \varepsilon^6 \theta^{14} + 22 \varepsilon^{10} \theta^{10} + 5 \varepsilon^{14} \theta^6) \end{array} \right),$$

$$Y_{2,2}^{(10)}(\tau) = \left(\begin{array}{c} \frac{9}{4} (\varepsilon^4 \theta^{16} - \varepsilon^8 \theta^{12} - \varepsilon^{12} \theta^8 + \varepsilon^{16} \theta^4) \\ -\frac{3\sqrt{3}}{16} (\varepsilon^2 \theta^{18} - 12 \varepsilon^6 \theta^{14} + 22 \varepsilon^{10} \theta^{10} - 12 \varepsilon^{14} \theta^6 + \varepsilon^{18} \theta^2) \end{array} \right),$$

$$Y_{3,1}^{(10)}(\tau) = \left(\begin{array}{c} \frac{3}{16\sqrt{2}} (\varepsilon^2 \theta^{18} - 34 \varepsilon^6 \theta^{14} + 34 \varepsilon^{14} \theta^6 - \varepsilon^{18} \theta^2) \\ \frac{3}{32} (\varepsilon^3 \theta^{17} - 34 \varepsilon^7 \theta^{13} + 34 \varepsilon^{15} \theta^5 - \varepsilon^{19} \theta) \\ -\frac{3}{32} (\varepsilon \theta^{19} - 34 \varepsilon^5 \theta^{15} + 34 \varepsilon^{13} \theta^7 - \varepsilon^{17} \theta^3) \end{array} \right),$$

$$Y_{3,2}^{(10)}(\tau) = \left(\begin{array}{c} \frac{9}{16} (\varepsilon^2 \theta^{18} - 2 \varepsilon^6 \theta^{14} + 2 \varepsilon^{14} \theta^6 - \varepsilon^{18} \theta^2) \\ \frac{9}{8\sqrt{2}} (\varepsilon^3 \theta^{17} + 5 \varepsilon^7 \theta^{13} - 13 \varepsilon^{11} \theta^9 + 7 \varepsilon^{15} \theta^5) \\ \frac{9}{8\sqrt{2}} (7 \varepsilon^5 \theta^{15} - 13 \varepsilon^9 \theta^{11} + 5 \varepsilon^{13} \theta^7 + \varepsilon^{17} \theta^3) \end{array} \right),$$

$$Y_{3',1}^{(10)}(\tau) = \left(\begin{array}{c} -\frac{3}{32\sqrt{29}} (\theta^{20} + 59 \varepsilon^4 \theta^{16} - 182 \varepsilon^8 \theta^{12} + 182 \varepsilon^{12} \theta^8 - 59 \varepsilon^{16} \theta^4 - \varepsilon^{20}) \\ 3\sqrt{\frac{2}{29}} (13 \varepsilon^9 \theta^{11} + 2 \varepsilon^{13} \theta^7 + \varepsilon^{17} \theta^3) \\ 3\sqrt{\frac{2}{29}} (\varepsilon^3 \theta^{17} + 2 \varepsilon^7 \theta^{13} + 13 \varepsilon^{11} \theta^9) \end{array} \right),$$

$$Y_{3',2}^{(10)}(\tau) = \begin{pmatrix} \frac{36}{\sqrt{13}} (\varepsilon^8 \theta^{12} - \varepsilon^{12} \theta^8) \\ -\frac{9}{16\sqrt{26}} (\varepsilon \theta^{19} + 20 \varepsilon^5 \theta^{15} + 14 \varepsilon^9 \theta^{11} - 28 \varepsilon^{13} \theta^7 - 7 \varepsilon^{17} \theta^3) \\ \frac{9}{16\sqrt{26}} (7 \varepsilon^3 \theta^{17} + 28 \varepsilon^7 \theta^{13} - 14 \varepsilon^{11} \theta^9 - 20 \varepsilon^{15} \theta^5 - \varepsilon^{19} \theta) \end{pmatrix},$$

$$Y_{3',3}^{(10)}(\tau) = \begin{pmatrix} \frac{9}{8} (\varepsilon^4 \theta^{16} - 3 \varepsilon^8 \theta^{12} + 3 \varepsilon^{12} \theta^8 - \varepsilon^{16} \theta^4) \\ \frac{9}{8\sqrt{2}} (\varepsilon^5 \theta^{15} - 3 \varepsilon^9 \theta^{11} + 3 \varepsilon^{13} \theta^7 - \varepsilon^{17} \theta^3) \\ -\frac{9}{8\sqrt{2}} (\varepsilon^3 \theta^{17} - 3 \varepsilon^7 \theta^{13} + 3 \varepsilon^{11} \theta^9 - \varepsilon^{15} \theta^5) \end{pmatrix}.$$

Appendix E. Explicit expressions for mass matrices

Making use of the expressions for modular form multiplets given in eqs. (3.14) and (3.15), one can write the mass matrices of eqs. (6.5) and (6.6) in terms of the $\theta(\tau)$ and $\varepsilon(\tau)$ functions. These matrices explicitly read:

$$M_\nu = \frac{2 v_u^2 g_1}{\sqrt{3} \Lambda} \begin{pmatrix} \frac{\theta^8}{2\sqrt{3}} \left[\left(1 - \frac{\sqrt{3}}{2} \tilde{g}_2\right) (1+x^2) + x (14 + 5\sqrt{3} \tilde{g}_2) \right] & -\frac{3}{4} \tilde{g}_3 \varepsilon^3 \theta^5 (1-x) & -\frac{3}{4} \tilde{g}_3 \varepsilon \theta^7 (1-x) \\ * & -\frac{3}{2} \varepsilon^2 \theta^6 \left[\tilde{g}_2 (1+x) + \frac{\tilde{g}_3}{\sqrt{2}} (1-x) \right] & \frac{\theta^8}{2\sqrt{3}} \left[\left(1 + \frac{\sqrt{3}}{4} \tilde{g}_2\right) (1+x^2) + x \left(14 - \frac{5\sqrt{3}}{2} \tilde{g}_2\right) \right] \\ * & * & -\frac{3}{2} \varepsilon^2 \theta^6 \left[\tilde{g}_2 (1+x) - \frac{\tilde{g}_3}{\sqrt{2}} (1-x) \right] \end{pmatrix}, \tag{E.1}$$

$$M_e^\dagger = v_d \alpha_1 \begin{pmatrix} \varepsilon \theta^5 (1-x) & -\frac{\theta^6}{\sqrt{6}} \left[\frac{\tilde{\alpha}_2}{2} (1+3x) - \frac{\tilde{\alpha}_3}{2\sqrt{2}} (1-5x) \right] & \varepsilon^2 \theta^4 \left[-\frac{\tilde{\alpha}_2}{2} \sqrt{\frac{3}{2}} \left(1 + \frac{x}{3}\right) - \frac{5\tilde{\alpha}_3}{4\sqrt{3}} \left(1 - \frac{x}{5}\right) \right] \\ -\frac{\theta^6}{\sqrt{6}} \left[\frac{\tilde{\alpha}_2}{2} (1+3x) + \frac{\tilde{\alpha}_3}{2\sqrt{2}} (1-5x) \right] & \frac{2}{\sqrt{3}} \tilde{\alpha}_2 \varepsilon^3 \theta^3 & \varepsilon \theta^5 \left[(1-x) + \frac{\tilde{\alpha}_3}{\sqrt{6}} (1+x) \right] \\ -\varepsilon^2 \theta^4 \left[\frac{\tilde{\alpha}_2}{2} \sqrt{\frac{3}{2}} \left(1 + \frac{x}{3}\right) - \frac{5\tilde{\alpha}_3}{4\sqrt{3}} \left(1 - \frac{x}{5}\right) \right] & \varepsilon \theta^5 \left[(1-x) - \frac{\tilde{\alpha}_3}{\sqrt{6}} (1+x) \right] & -\frac{2}{\sqrt{3}} \tilde{\alpha}_2 \varepsilon^3 \theta^3 \end{pmatrix}, \tag{E.2}$$

where $x \equiv \varepsilon^4/\theta^4$, and stars denote repeated elements of a symmetric matrix. Here, $\tilde{g}_{2(3)} \equiv g_{2(3)}/g_1$ and $\tilde{\alpha}_{2(3)} \equiv \alpha_{2(3)}/\alpha_1$. Exact expressions for the determinants of these matrices are

$$\det M_\nu = C \theta^{24} \left(\frac{3}{32} \tilde{g}_2^2 \left[6(1+14x+x^2) \left((1-10x+x^2)^2 + 48x(1+x)^2 \right) + \sqrt{3} \tilde{g}_2 (1-10x+x^2) \left((1-10x+x^2)^2 - 144x(1+x)^2 \right) \right] - (1+14x+x^2)^3 + \frac{81\sqrt{3}}{8} x(1-x)^4 \tilde{g}_3^2 \left[3\tilde{g}_2 + \sqrt{2}\tilde{g}_3 \right] \right),$$

with $C \equiv \left(\frac{g_1 v_u^2}{3\Lambda} \right)^3$,

(E.3)

$$\det M_e^\dagger = -v_d^3 \alpha_1^3 \varepsilon^3 \theta^{15} (1-x)^3 \left(1 - \frac{1}{12\sqrt{3}} \tilde{\alpha}_2^3 - \frac{3}{8} \tilde{\alpha}_3^2 + \frac{\sqrt{3}}{8} \tilde{\alpha}_2 \tilde{\alpha}_3^2 - \frac{1}{4} \tilde{\alpha}_2^2 \right).$$
(E.4)

References

- [1] K. Nakamura, S.T. Petcov, Neutrino masses, mixing, and oscillations, in M. Tanabashi et al. (Particle Data Group), Review of Particle Physics, Phys. Rev. D 98 (2018) 030001 and 2019 update.
- [2] G. Altarelli, F. Feruglio, Discrete flavor symmetries and models of neutrino mixing, Rev. Mod. Phys. 82 (2010) 2701, arXiv:1002.0211.
- [3] H. Ishimori, T. Kobayashi, H. Ohki, Y. Shimizu, H. Okada, M. Tanimoto, Non-Abelian discrete symmetries in particle physics, Prog. Theor. Phys. Suppl. 183 (2010) 1, arXiv:1003.3552.
- [4] S.F. King, C. Luhn, Neutrino mass and mixing with discrete symmetry, Rep. Prog. Phys. 76 (2013) 056201, arXiv:1301.1340.
- [5] M. Tanimoto, Neutrinos and flavor symmetries, AIP Conf. Proc. 1666 (2015) 120002.
- [6] S.T. Petcov, Discrete flavour symmetries, neutrino mixing and leptonic CP violation, Eur. Phys. J. C 78 (2018) 709, arXiv:1711.10806.
- [7] I. Esteban, M.C. Gonzalez-Garcia, A. Hernandez-Cabezudo, M. Maltoni, T. Schwetz, Global analysis of three-flavour neutrino oscillations: synergies and tensions in the determination of θ_{23} , δ_{CP} , and the mass ordering, J. High Energy Phys. 01 (2019) 106, arXiv:1811.05487.
- [8] F. Capozzi, E. Di Valentino, E. Lisi, A. Marrone, A. Melchiorri, A. Palazzo, Addendum to: global constraints on absolute neutrino masses and their ordering, arXiv:2003.08511.
- [9] T2K collaboration, K. Abe, et al., Constraint on the matter-antimatter symmetry-violating phase in neutrino oscillations, Nature 580 (2020) 339, arXiv:1910.03887.
- [10] F. Feruglio, C. Hagedorn, R. Ziegler, Lepton mixing parameters from discrete and CP symmetries, J. High Energy Phys. 07 (2013) 027, arXiv:1211.5560.
- [11] M. Holthausen, M. Lindner, M.A. Schmidt, CP and discrete flavour symmetries, J. High Energy Phys. 04 (2013) 122, arXiv:1211.6953.
- [12] F. Feruglio, Are neutrino masses modular forms?, in: A. Levy, S. Forte, G. Ridolfi (Eds.), From My Vast Repertoire ...: Guido Altarelli's Legacy, World Scientific Publishing, 2019, pp. 227–266, arXiv:1706.08749.
- [13] M.-C. Chen, S. Ramos-Sánchez, M. Ratz, A note on the predictions of models with modular flavor symmetries, Phys. Lett. B 801 (2020) 135153, arXiv:1909.06910.
- [14] T. Kobayashi, K. Tanaka, T.H. Tatsuishi, Neutrino mixing from finite modular groups, Phys. Rev. D 98 (2018) 016004, arXiv:1803.10391.
- [15] H. Okada, Y. Orikasa, Modular S_3 symmetric radiative seesaw model, Phys. Rev. D 100 (2019) 115037, arXiv:1907.04716.
- [16] J.C. Criado, F. Feruglio, Modular invariance faces precision neutrino data, SciPost Phys. 5 (2018) 042, arXiv:1807.01125.
- [17] T. Kobayashi, N. Omoto, Y. Shimizu, K. Takagi, M. Tanimoto, T.H. Tatsuishi, Modular A_4 invariance and neutrino mixing, J. High Energy Phys. 11 (2018) 196, arXiv:1808.03012.
- [18] P. Novichkov, S. Petcov, M. Tanimoto, Trimaximal neutrino mixing from modular A_4 invariance with residual symmetries, Phys. Lett. B 793 (2019) 247, arXiv:1812.11289.
- [19] T. Nomura, H. Okada, A modular A_4 symmetric model of dark matter and neutrino, Phys. Lett. B 797 (2019) 134799, arXiv:1904.03937.

- [20] T. Nomura, H. Okada, A two loop induced neutrino mass model with modular A_4 symmetry, arXiv:1906.03927.
- [21] G.-J. Ding, S.F. King, X.-G. Liu, Modular A_4 symmetry models of neutrinos and charged leptons, J. High Energy Phys. 09 (2019) 074, arXiv:1907.11714.
- [22] H. Okada, Y. Orikasa, A radiative seesaw model in modular A_4 symmetry, arXiv:1907.13520.
- [23] T. Nomura, H. Okada, O. Popov, A modular A_4 symmetric scotogenic model, Phys. Lett. B 803 (2020) 135294, arXiv:1908.07457.
- [24] T. Asaka, Y. Heo, T.H. Tatsuishi, T. Yoshida, Modular A_4 invariance and leptogenesis, J. High Energy Phys. 01 (2020) 144, arXiv:1909.06520.
- [25] G.-J. Ding, S.F. King, X.-G. Liu, J.-N. Lu, Modular S_4 and A_4 symmetries and their fixed points: new predictive examples of lepton mixing, J. High Energy Phys. 12 (2019) 030, arXiv:1910.03460.
- [26] D. Zhang, A modular A_4 symmetry realization of two-zero textures of the Majorana neutrino mass matrix, Nucl. Phys. B 952 (2020) 114935, arXiv:1910.07869.
- [27] T. Nomura, H. Okada, S. Patra, An inverse seesaw model with A_4 -modular symmetry, arXiv:1912.00379.
- [28] T. Kobayashi, T. Nomura, T. Shimomura, Type II seesaw models with modular A_4 symmetry, arXiv:1912.00637.
- [29] X. Wang, Lepton flavor mixing and CP violation in the minimal type-(I+II) seesaw model with a modular A_4 symmetry, arXiv:1912.13284.
- [30] H. Okada, Y. Shoji, A radiative seesaw model in modular A_4 symmetry, arXiv:2003.13219.
- [31] G.-J. Ding, F. Feruglio, Testing moduli and flavon dynamics with neutrino oscillations, arXiv:2003.13448.
- [32] J.T. Penedo, S.T. Petcov, Lepton masses and mixing from modular S_4 symmetry, Nucl. Phys. B 939 (2019) 292, arXiv:1806.11040.
- [33] P. Novichkov, J. Penedo, S. Petcov, A. Titov, Modular S_4 models of lepton masses and mixing, J. High Energy Phys. 04 (2019) 005, arXiv:1811.04933.
- [34] T. Kobayashi, Y. Shimizu, K. Takagi, M. Tanimoto, T.H. Tatsuishi, New A_4 lepton flavor model from S_4 modular symmetry, J. High Energy Phys. 02 (2020) 097, arXiv:1907.09141.
- [35] H. Okada, Y. Orikasa, Neutrino mass model with a modular S_4 symmetry, arXiv:1908.08409.
- [36] T. Kobayashi, Y. Shimizu, K. Takagi, M. Tanimoto, T.H. Tatsuishi, A_4 lepton flavor model and modulus stabilization from S_4 modular symmetry, Phys. Rev. D 100 (2019) 115045, arXiv:1909.05139; Erratum: Phys. Rev. D 101 (2020) 039904.
- [37] X. Wang, S. Zhou, The minimal seesaw model with a modular S_4 symmetry, arXiv:1910.09473.
- [38] P. Novichkov, J. Penedo, S. Petcov, A. Titov, Modular A_5 symmetry for flavour model building, J. High Energy Phys. 04 (2019) 174, arXiv:1812.02158.
- [39] G.-J. Ding, S.F. King, X.-G. Liu, Neutrino mass and mixing with A_5 modular symmetry, Phys. Rev. D 100 (2019) 115005, arXiv:1903.12588.
- [40] G.-J. Ding, S.F. King, C.-C. Li, Y.-L. Zhou, Modular invariant models of leptons at level 7, arXiv:2004.12662.
- [41] H. Okada, M. Tanimoto, CP violation of quarks in A_4 modular invariance, Phys. Lett. B 791 (2019) 54, arXiv:1812.09677.
- [42] T. Kobayashi, Y. Shimizu, K. Takagi, M. Tanimoto, T.H. Tatsuishi, H. Uchida, Finite modular subgroups for fermion mass matrices and baryon/lepton number violation, Phys. Lett. B 794 (2019) 114, arXiv:1812.11072.
- [43] H. Okada, M. Tanimoto, Towards unification of quark and lepton flavors in A_4 modular invariance, arXiv:1905.13421.
- [44] T. Kobayashi, Y. Shimizu, K. Takagi, M. Tanimoto, T.H. Tatsuishi, Modular S_3 invariant flavor model in SU(5) GUT, arXiv:1906.10341.
- [45] M. Abbas, Flavor masses and mixing in modular A_4 symmetry, arXiv:2002.01929.
- [46] H. Okada, M. Tanimoto, Quark and lepton flavors with common modulus τ in A_4 modular symmetry, arXiv:2005.00775.
- [47] P.P. Novichkov, J.T. Penedo, S.T. Petcov, A.V. Titov, Generalised CP symmetry in modular-invariant models of flavour, J. High Energy Phys. 07 (2019) 165, arXiv:1905.11970.
- [48] T. Kobayashi, Y. Shimizu, K. Takagi, M. Tanimoto, T.H. Tatsuishi, H. Uchida, CP violation in modular invariant flavor models, arXiv:1910.11553.
- [49] J.C. Criado, F. Feruglio, S.J. King, Modular invariant models of lepton masses at levels 4 and 5, J. High Energy Phys. 02 (2020) 001, arXiv:1908.11867.
- [50] S.J. King, S.F. King, Fermion mass hierarchies from modular symmetry, arXiv:2002.00969.
- [51] I. De Medeiros Varzielas, S.F. King, Y.-L. Zhou, Multiple modular symmetries as the origin of flavour, Phys. Rev. D 101 (2020) 055033, arXiv:1906.02208.
- [52] S.F. King, Y.-L. Zhou, Trimaximal TM_1 mixing with two modular S_4 groups, Phys. Rev. D 101 (2020) 015001, arXiv:1908.02770.

- [53] T. Kobayashi, S. Nagamoto, S. Takada, S. Tamba, T.H. Tatsuishi, Modular symmetry and non-Abelian discrete flavor symmetries in string compactification, *Phys. Rev. D* 97 (2018) 116002, arXiv:1804.06644.
- [54] T. Kobayashi, S. Tamba, Modular forms of finite modular subgroups from magnetized d-brane models, *Phys. Rev. D* 99 (2019) 046001, arXiv:1811.11384.
- [55] F.J. de Anda, S.F. King, E. Perdomo, $SU(5)$ grand unified theory with A_4 modular symmetry, *Phys. Rev. D* 101 (2020) 015028, arXiv:1812.05620.
- [56] A. Baur, H.P. Nilles, A. Trautner, P.K. Vaudrevange, Unification of flavor, CP, and modular symmetries, *Phys. Lett. B* 795 (2019) 7, arXiv:1901.03251.
- [57] Y. Kariyazono, T. Kobayashi, S. Takada, S. Tamba, H. Uchida, Modular symmetry anomaly in magnetic flux compactification, *Phys. Rev. D* 100 (2019) 045014, arXiv:1904.07546.
- [58] A. Baur, H.P. Nilles, A. Trautner, P.K. Vaudrevange, A string theory of flavor and CP, *Nucl. Phys. B* 947 (2019) 114737, arXiv:1908.00805.
- [59] H.P. Nilles, S. Ramos-Sanchez, P.K.S. Vaudrevange, Eclectic flavor groups, arXiv:2001.01736.
- [60] T. Kobayashi, H. Otsuka, Classification of discrete modular symmetries in Type IIB flux vacua, arXiv:2001.07972.
- [61] H. Abe, T. Kobayashi, S. Uemura, J. Yamamoto, Loop Fayet-Iliopoulos terms in T^2/Z_2 models: instability and moduli stabilization, arXiv:2003.03512.
- [62] H. Ohki, S. Uemura, R. Watanabe, Modular flavor symmetry on magnetized torus, arXiv:2003.04174.
- [63] H.P. Nilles, S. Ramos-Sanchez, P.K. Vaudrevange, Lessons from eclectic flavor symmetries, arXiv:2004.05200.
- [64] S. Kikuchi, T. Kobayashi, S. Takada, T.H. Tatsuishi, H. Uchida, Revisiting modular symmetry in magnetized torus and orbifold compactifications, arXiv:2005.12642.
- [65] T. Kobayashi, H. Otsuka, Challenge for spontaneous CP violation in Type IIB orientifolds with fluxes, arXiv:2004.04518.
- [66] S. Ferrara, D. Lust, S. Theisen, Target space modular invariance and low-energy couplings in orbifold compactifications, *Phys. Lett. B* 233 (1989) 147.
- [67] X.-G. Liu, G.-J. Ding, Neutrino masses and mixing from double covering of finite modular groups, *J. High Energy Phys.* 08 (2019) 134, arXiv:1907.01488.
- [68] J.-N. Lu, X.-G. Liu, G.-J. Ding, Modular symmetry origin of texture zeros and quark lepton unification, arXiv:1912.07573.
- [69] F. Feruglio, A. Romanino, Neutrino flavour symmetries, arXiv:1912.06028.
- [70] S. Ferrara, D. Lust, A.D. Shapere, S. Theisen, Modular invariance in supersymmetric field theories, *Phys. Lett. B* 225 (1989) 363.
- [71] L.J. Dixon, V. Kaplunovsky, J. Louis, On effective field theories describing $(2,2)$ vacua of the heterotic string, *Nucl. Phys. B* 329 (1990) 27.
- [72] L.E. Ibanez, D. Lust, Duality anomaly cancellation, minimal string unification and the effective low-energy Lagrangian of 4-D strings, *Nucl. Phys. B* 382 (1992) 305, arXiv:hep-th/9202046.
- [73] Y. Olguín-Trejo, S. Ramos-Sánchez, Kähler potential of heterotic orbifolds with multiple Kähler moduli, *J. Phys. Conf. Ser.* 912 (2017) 012029, arXiv:1707.09966.
- [74] R. de Adelhart Toorop, F. Feruglio, C. Hagedorn, Finite modular groups and lepton mixing, *Nucl. Phys. B* 858 (2012) 437, arXiv:1112.1340.
- [75] D. Schultze, Notes on modular forms, <https://faculty.math.illinois.edu/~schult25/ModFormNotes.pdf>, 2015.
- [76] The GAP Group, GAP – groups, algorithms, and programming, Version 4.10.2, <https://www.gap-system.org>, 2019.
- [77] H.U. Besche, B. Eick, E. O’Brien, SmallGrp – a GAP package, Version 1.3, <https://gap-packages.github.io/smallgrp>, 2018.
- [78] L.K. Hua, I. Reiner, Automorphisms of the unimodular group, *Trans. Am. Math. Soc.* 71 (1951) 331.
- [79] M.-C. Chen, M. Fallbacher, K. Mahanthappa, M. Ratz, A. Trautner, CP violation from finite groups, *Nucl. Phys. B* 883 (2014) 267, arXiv:1402.0507.
- [80] O. Karpenkov, *Geometry of Continued Fractions, Algorithms and Computation in Mathematics*, Springer, 2013, p. 405.
- [81] G. Ross, M. Serna, Unification and fermion mass structure, *Phys. Lett. B* 664 (2008) 97, arXiv:0704.1248.
- [82] N. Cardiel, Data boundary fitting using a generalized least-squares method, *Mon. Not. R. Astron. Soc.* 396 (2009) 680, arXiv:0903.2068.
- [83] S. Kharchev, A. Zabrodin, Theta vocabulary I, *J. Geom. Phys.* 94 (2015) 19, arXiv:1502.04603.
- [84] D. Mumford, *Tata Lectures on Theta I*, Progress in Mathematics, Birkhäuser, Boston, 1983, p. 52.